

COSMIC ODYSSEY

SERVICE BOTS AND SYNTHETIC COMPANIONS



A SUPPLEMENT FOR INTELLIGENT ROBOTS AND SERVICE MACHINES.

STARFINDER
COMPATIBLE

COSMIC ODYSSEY

SERVICE BOTS AND SYNTHETIC COMPANIONS

Compatibility with the Starfinder Roleplaying Game requires the Starfinder Roleplaying Game from Paizo Inc. See <http://paizo.com/starfinder> for more information on the Starfinder Roleplaying Game. Paizo Inc. does not guarantee compatibility, and does not endorse this product.

Starfinder is a registered trademark of Paizo Publishing, LLC, and the Starfinder® Roleplaying Game and the Starfinder® Roleplaying Game Compatibility Logo are trademarks of Paizo Publishing, LLC, and are used under the Starfinder® Roleplaying Game Compatibility License. See <http://paizo.com/starfinder/compatibility> for more information on the compatibility license.

Open Game Content: All material — including but not limited to art, place and character names, character and setting descriptions, background, and new class descriptions—is Product Identity. All other content is considered Open Game Content.

Reference in non-Open Game Content (thus not covered by the Open Game License) in this work to content owned by others is not a challenge to their ownership and is used under Fair Use.



CREDITS

Author: Kiel Howell

Editor: Lucas Palosaari

Copy Editor: Troy Daniels

Artist: Rick Hershey

Design and Layout: Rick Hershey

Fat Goblin Hoarde: Ben Dowell, Eric Hindley, Ismael Alvarez, J Gray, Jason Owen Black, Jeffrey Swank, John Bennett, Justice Mora, Kalyna Conrad, Kiel Howell, Kim Frandsen, Landon Winkler, Matt Roth, Michael Ritter, Rodney Sloan, Taylor Hubler, Lucas Palosaari, Rick Hershey, and Troy Daniels

Business Manager: Tristan Hershey

Publisher: Rick Hershey of Fat Goblin Games

Cosmic Odyssey: Service Bots and Synthetic Companions © 2017 Fat Goblin Games



TABLE OF CONTENTS

Introduction	4	Additional Rules Concerning Service Bots	13
Service Bots	5	Service Bot Manufacturers	19
Basic Starting Point	7	Plots & Rumors	22
Name & Manufacturer	7	Example Service Bots	23
Tier	7	Tier 1	23
Service Bot Design & Mechanics	7	Tier 2	26
Price	8	Tier 3	30
Size	8	Tier 4	33
Appendages	9	Tier 5	37
Frame & Speed	9	Tier 6	40
Controller Interface	9	Tier 7	44
Speed & Propulsion	11	Tier 8	47
Computer	11	Tier 9	51
Power Source (PS) & Output Units (OUs)	12	Tier 10	55
Add-Ons	13		

ABOUT FAT GOBLIN GAMES

Based in South Carolina, USA, **Fat Goblin Games** was founded in 2011 to create *Pathfinder Roleplaying Game* compatible products. With a focus on high quality production values and providing a creative environment for our team of freelancers (*The Fat Goblin Hoarde*), **Fat Goblin Games** has quickly become a recognized force in the world of Third Party Publishers of not just the *Pathfinder Roleplaying Game* and *5th Edition Fantasy*, but also supporting the *vs. M Engine* and releasing official products for *Castle Falkenstein*, originally published by **R. Talsorian Games**. With hundreds of support books, visual aids, campaign settings, and quality stock art, **Fat Goblin Games** continues to provide exciting content and fantastic worlds in which gamers can immerse themselves.

Visit us on [Facebook](#), follow us on [Twitter](#) and check out our website at [fatgoblingames.com](#).

INTRODUCTION



Who doesn't want a robotic sidekick to join them as they traverse the stars? Well *Cosmic Odyssey: Service Bots & Synthetic Companions* has you covered!

Cosmic Odyssey is a line of *Starfinder Roleplaying Game* compatible products designed to give you, as both a player and as a gamemaster, all the tools you need to fully explore a classic motif of science fiction with new character options, equipment and vessels, as well as a location and NPCs. Designed to be dropped into your existing game, or to serve as a starting point for your adventures, each **Cosmic Odyssey** is ready-made for action. In **Service Bots & Synthetic Companions** we bring you all the rules

you need for building your very own robot pal as well as several pre-made Service Bots, or SBs. These synthetic companions exist in a space outside the fully-autonomous android race and the advanced machine companions of the mechanic class's drones. Instead, our SBs are robotic companions for everyone (that can afford them). And, rather than just generic rules, an entire corporate world of competing manufacturers with different goals and ideals — as well as of course designs — is presented to provide gamemasters with a rich tapestry of backdrops and plot hooks, as well as to give players more flavorful companions than just a string of letters and numbers for their robotic buddies.

A NOTE ON PRONOUNS AND SEXUALITY

Service bots have no gender and no sexuality, even SBs modelled after a specific gender of a creature. While some creatures may refer to their SB as a he or a she (or whatever gender pronouns are appropriate for that creature's species), the default gender neutral pronoun of "xe" (pronounced "zee") is used when referring to an SB or whatever moniker given to it. See the table on gender neutral pronunciation. While SBs are asexual it is the purview of the player, the GM, and the group if they are comfortable having a service bot serve as a sexualized object. An open and honest discussion around this topic is highly recommended for each group to avoid any issues that could arise from an assumption on gender and/or sexuality.

GENDER NEUTRAL PRONUNCIATION

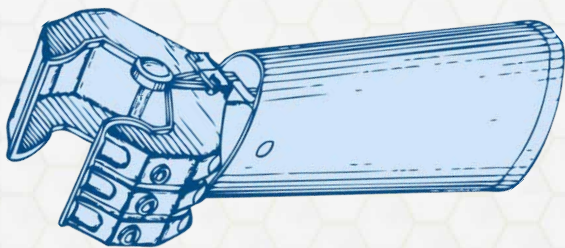
Nominative	Objective	Possessive Determiner	Possessive Pronoun	Reflexive
Xe ("zee")	Xem ("zem")	Xyr ("zir")	Xyrs ("zirs")	Xemself ("zemself")

⚡ SERVICE BOTS

“Service bots,” or SBs, are robotic sidekicks that you can build or purchase to take with you on your adventures throughout the cosmic vast. Each one has a primary purpose in aiding their controlling creature and each one comes with a basic AI personality that can be customised to suit your tastes. Primary purposes of SBs can range anywhere from helping with diplomacy and language, storing some things you’d rather not carry, assist in lifting or moving heavy objects, or travelling across difficult terrain.

INFLUENCES

There were many influences on the design of this book and the service bots and synthetic companions contained within cross a variety of mediums. From books, I especially love the *Hitchhiker’s Guide* books and the various robots and artificial personalities (especially Marvin the Paranoid Android) contained within: *I, Robot*, the golems from *The Discworld* books, the advanced technology from the *Apprentice Adept* series, the *Star Brigade* series, and my personal favorite series *Dune* and many others. From film and television there’s obviously *Star Trek* and *Star Wars* (neither is better, I’m a fanboy for both!), *Terminator*, *Galaxy Quest*, *Doctor Who*, *Ben 10*, *Battlestar Galactica* (old and new), *Ghost in the Shell* (the anime), *Gurren Lagann*, and many more. Video games such as *MechWarrior*, *Megaman*, *Ratchet & Clank*, *R.O.B.* the robot, *Portal*, and far more than I can write here also influenced this book. I was also a fan of listening to old radio shows such as *Alien Worlds*, *Tales of Tomorrow*, *Earthsearch*, *The War of the Worlds*, and many other such radio shows my grandmother would listen to. I was always partial to robotic characters in comic books as well such as The Vision, Amazo, Ultron, Sentinels, Skeets, Nimrod, and so many others that I gleefully read.



ARTIFICIAL INTELLIGENCE VS. AUTONOMOUS INTELLIGENCE

Typically, in science fiction (and its various sub genres), the term artificial intelligence is used as a blanket term for any android/computer/robot/etc. which thinks in the same or similar fashion as a human being. While this certainly suffices in general, there is a hefty difference between artificial intelligence and autonomous intelligence for purposes of service bots, synthetic companions, or whatever you wish to call your robots. There is an assumption in this book that robots and service bots are a category of machine that can interact with creatures in a programmed way, albeit cleverly, but it is still at its core an automaton reading from a script. SBs are an artificial intelligence that understands many directions but must be commanded to perform them.

A quick search on the definition of artificial intelligence yields this, “the theory and development of computer systems able to perform tasks that normally require human intelligence, such as visual perception, speech recognition, decision-making, and translation between languages.” [[OxfordDictionaries.com](#)] That encapsulates exactly how a service bot would function, and the important factor here is that the artificial intelligence needs a task to be given to it before it can act. An autonomous agent, with a cursory search, will lead to the definition “an intelligence which functions on an owner’s behalf without interference from the owning entity.” [[Wikipedia](#)] The mechanic’s drone would be a good example of an autonomous agent; it is intelligent and can act without interference of the mechanic, but it still needs instruction of some sort at some point in time to know what the owner’s behalf constitutes. Autonomous intelligence would be an autonomous agent that is its own owning entity. Autonomous intelligence would be how, in the *Starfinder Roleplaying Game*, androids as a race function.

There are many interesting stories to tell by exploring the nuances between an artificial intelligence, an autonomous agent, an autonomous intelligence, and non-artificial intelligence. Perhaps a faction of androids have become zealots against the non-artificial universe and is slowly buying up all the SBs they can. Maybe non-artificial creatures have formed a coalition demanding the registering of all artificial, autonomous intelligences to prevent a possible machine revolt against non-synthetic lifeforms or a general feeling of mistrust of thinking machines like a certain machine jihad in a popular science fiction series. It can also add flavor to specific social encounter with a character possibly saying the term artificial intelligence to an android and some small tension occurs. Whatever you feel adds to your game, your character(s), or your playstyle this is a great avenue to explore things such as mechanical and bio ethics and defining what constitutes life.

ARTIFICIAL PERSONALITY

Each service bot is assumed to have a basic artificial personality, largely roleplayed by the player. Keep in mind that the tier of the computer (and overall tier of the SB) represents how advanced the functions are and should reflect in the artificial personality. For example, it likely wouldn't be appropriate for a tier 1 computer in an SB to function like Socrates or Euripides and likewise it probably isn't quite right for a tier 5 computer in an SB to function like a simple adding machine. This is still largely up to the player and GM. Perhaps the player has a character concept who is especially gifted with programming or understanding of the complex social interactions that can occur between creatures and their SB's artificial personality would reflect that at any tier. A service bot's artificial personality generally means that the add-ons (and any bonuses they confer) are only useful to the owner/operator. An SB can be ordered to use an add-on to benefit the party or another creature

but the artificial personality that is standard for that model may cause griping or flat out refusal without some sort of override code.

It is assumed that the artificial personality of an SB is essentially a complex script (meaning the responses are pre-programmed). If something occurs outside of that script's purview then the SB would likely be confused or simply respond in a negative manner. As a player either upgrades to or purchases higher tier service bots then it is assumed that script has grown accordingly more complex in an attempt to imitate true autonomous intelligence. The pregenerated service bots below are all assumed to have basic artificial personality but the descriptive text for each model should provide some ideas as to how the manufacturer would have programmed the SB to respond in general. Typically, SBs are programmed to be as inoffensive as possible but this again can entirely be reflective of your PC concept. If you are a wisecracking scoundrel then your SB would likely reflect that. Similarly if you are a demure character then your SB probably would try to be as unnoticeable as possible.

A service bot will never respond autonomously unless the owner/operator has specified to do so. SBs need input from the owner/operator and would very likely look to the PC for orders or would simply state something along the lines of "My owner must instruct me" if a non-owner/non-operator attempts to give it an order. Hacking the SB will allow the artificial personality to be rewritten completely with root access, even so far as to betray the owner/operator at a crucial moment. There are many potential subplots that can be had using an SBs artificial personality. It can also be a good avenue to explore concepts such as what is the self, what comprises personality, and other such topics.

SERVICE BOT DESIGN & MECHANICS

This book can be used in two ways: to use only our pre-fabricated bots OR to make your own using our rules. Presented later in the book are 100 example service bots. Each of these is presented as a stat block, and the following section will help you understand and break that section down, as well as offer you options for how to customize your SB. These same rules here can be used with a blank sheet (see the back of this book)

⚡ BASIC STARTING POINT

All SBs are constructs with the technological subtype and they consist of a power source, computer (see the “Computers” section in Chapter 7 of the *Starfinder Roleplaying Game: Core Rulebook*), a frame, controller interface, propulsion, and add-ons. SBs each have a tier and a size. SBs automatically fail saving throws unless you decide to use the optional attributes presented below. SBs are designed to be waterproof and vacuum-proof by design, at least for minor exposure. Prolonged cold of the vacuum of space or full submersion in water will break seals and fry electronics at gamemaster discretion.

EXTREME ENVIRONMENTS

Service bots can survive briefly in extreme environments such as zero-g, fully immersed in aquatic environments, extreme heat, or corrosive atmospheres. Without special add-ons to enable it to survive longer an SB will begin to take damage after one minute in an extreme environment. After five minutes, an SB will become completely non-functional in an extreme environment. At the GM's discretion, the SB's frame will continue to

degrade but not be fully destroyed for years (though power sources may deplete normally), allowing a non-functioning SB discovered in an extreme environment to be recharged and repaired to an operational condition.

⚡ NAME & MANUFACTURER

Every SB is given a name (which functions as its type and often includes a serial number, etc), and has a specific, fictional manufacturer listed (these competing manufacturers are detailed later in the book).

⚡ TIER

The tier of an SB determines its general abilities to aid or interact with its operator, perform commands, and its level of autonomy. A higher tier SB usually has a more advanced computer, a higher degree of autonomy, and is better able to aid and interact with its controlling creature. These are still relatively simple robots though, advanced robots are the purview of government and military organizations or creatures who specialize deeply in building mechanical creatures. SB tier is calculated as its computer tier plus 1/2 tier per add-on (rounded down).



ABILITY SCORES, SKILL POINTS, AND SAVING THROWS BY TIER

Specific ability scores and saving throws are completely optional for your service bot. It is assumed that SBs automatically fail a saving throw but it can be more interesting to have to roll for the outcome. The same goes for ability scores, for all intents and purposes an SB is considered to fail any check that requires an ability score. Service bots also have 0 ranks in every skill unless using the optional skill ranks listed below.

Service bots are assumed to have a ten ability score across all categories (except Constitution, which as a technological construct is —). An SB is also assumed to have a zero for all of its saving throws except for one which is equal to its tier, most often Fortitude (Reflex requires a form of self-propulsion and Will save would apply to few circumstances). For example, a tier 10 SB could have a Fort +10, Reflex +0, and Will +0. Every service bot is assumed to have zero ranks in any skill but they optionally may choose one skill and have a rank equal to its overall tier. For example, a tier 5 service bot may have Knowledge (engineering) 5 and zero in everything else. A service bot can Aid Another, provided they have an appropriate add-on or optional skill ranks. For example, BlueJo the lashunta wishes to attempt a Physical Sciences check to identify a piece of stone found. His party member J'ala the vesk has her SB equipped with a mass spectrometer. J'ala can order her SB to Aid Another on BlueJo's check, granting a +2 to that check.

PRICE

To calculate the price of a service bot, you sum up the price of its components; add-on(s), computer, frame and any frame upgrades, manufacturer bonus (if affecting price), and power source(s). The below example will demonstrate this.

Add-on(s): storage compartment x4 (50 credits each), turbo (2,500 credits each)

Computer: Tier II (250 credits)

Frame: Quad-III (175 credits)

Frame Upgrades: Durability (500 credits)

Manufacturer Bonus: QBCP (10% discount off total)

Power Source(s): PS Mk II (200 credits each)

Total: $(50 \times 4) + 2,500 + 250 + 175 + 500 + 200 = 3,825$ credits – $(3,825 \times 0.10) = 3,442.5$ credits

SIZE

Most SBs are Small or Medium sized constructs, but whether through constant additions, miniaturization, rebuilding, or purchasing a new one, Tiny and Large sized SBs exist. Moving to Tiny or Large sized SBs requires quality components that are more expensive and a higher output battery than a Small or Medium sized SB. SBs are assumed to be independently mobile, but if their propulsion is broken (or it was built without propulsion) then any SB with a bulk of 1 or more must be set on a sturdy surface to function properly. Any SB with a bulk of 25 or more is not meant to be mobile without its propulsion.

SIZE & TIER

Small or Medium size is the assumed starting size of the frame of an SB. Each size increase or decrease (up to a maximum of Large or minimum of Tiny) adds +1 to its overall Tier and doubles the power consumption of the frame to 2 OU. Small or Medium sized SBs have a bulk equal to its 2 x its tier plus 1/2 for every add-on. For example, a diplobot Mk. 1 with quantum comms add-on is 1st tier, so $2 \times 1 + 1/2 = 2.5$ rounded down to 2 bulk. Tiny SBs subtract 1 from this value as their bulk due to their size.

APPENDAGES

The frame determines the number of appendages a specific SB possesses. Whether these are legs, tentacles, pogo stick, or whatever you wish to describe them as, all appendages are used for propulsion or manipulation. Their fine motor skills are typically limited. SBs can not typically carefully grasp and operate small objects (such as a laser pistol), although they may easily push or drag tethered objects of 10 bulk or less, although the appendages can certainly pull a lever, push a button, or flip a switch. Appendages can use add-on slots for additional functionality as listed in **Add-Ons**.

FRAME & SPEED

Each SB has a frame that serves as its skeleton. The frame determines the number of appendages, movement speed, and how many add-on slots an SB possesses. Frames allowing a higher number of add-on slots are more expensive. Each frame comes with a basic, plastic-like assortment of facial features and skin plates to be determined by the person building the SB. These features are cosmetic and the SB is obviously a robot.

Frames allow for an SB to possess zero to eight appendages, to be used as designated by the service bots programming. All SBs with more than one appendage may be controlled by multiple simultaneous operators, for example an Oct-IV frame has eight appendages and could have as many as eight simultaneous operators.

Frames may be upgraded with more durability (allowing the SB to withstand more damage before becoming inoperative) or more add-on slots, each upgrade increases the tier of the SB by 1/2 rounded down and costing +500 credits per upgrade. The prefabricated units listed below do not include this in their tier as manufacturers try to undersell and make their units more desirable than other manufacturers. Each durability upgrade adds +5 HP

or +1 Hardness chosen at the time of upgrade. All frames are assumed as Small or Medium, frames with a size of Large or Tiny increase the tier of the SB by 1 and costs +500 gp more than an equivalent Small or Medium frame.

CONTROLLER INTERFACE

The controller interface for an SB is the same as the User Interface of its computer (see the “Computers” section of Chapter 7 in the *Starfinder Roleplaying Game: Core Rulebook*). Typically, SBs have microphone, visual recorder, and a hidden keyboard to accept eye tracking, gesture, typed, or verbal commands. SBs typically have speakers, viewscreen, and appendages to relay gesture, tactile, typed, or verbal responses.

More advanced or rare controller interfaces exist, such as telepathic or magical, but these controller interfaces are specialized, more expensive, and highly power consumptive. Assume that any advanced controller interface not covered in this book cost 1,000 credits and require one add-on slot and 1 OU to power. Any standard controller interfaces do not require dedicated OU (it’s part of the base 1 OU all SBs require to be active)

LANGUAGE

SBs are typically programmed to understand either Common or a default language of the owner’s choice (and it always “understands” it in the form of any controller interface it includes — so spoken as a language if it takes commands verbally, written if it takes commands from a keyboard, etc). Certain modifications can increase the number of languages an SB understands.

FRAMES

Name	Appendages	Add-On Slots	Speed	Price
Du-I	2	2	20 ft.	75
Du-II	2	4	20 ft.	100
Du-III	2	6	20 ft.	125
Du-IV	2	8	20 ft.	150
Hex-I	6	3	40 ft.	175
Hex-II	6	5	40 ft.	200
Hex-III	6	7	40 ft.	225
Hex-IV	6	9	40 ft.	250
Nil-I	0	1	10 ft.	25
Nil-II	0	2	10 ft.	50
Nil-III	0	3	10 ft.	75
Nil-IV	0	4	10 ft.	100
Oct-I	8	4	50 ft.	225
Oct-II	8	6	50 ft.	250
Oct-III	8	8	50 ft.	275
Oct-IV	8	10	50 ft.	300
Pent-I	5	5	35 ft.	150
Pent-II	5	6	35 ft.	175
Pent-III	5	7	35 ft.	200
Pent-IV	5	8	35 ft.	225
Quad-I	4	2	30 ft.	125
Quad-II	4	4	30 ft.	150
Quad-III	6	3	30 ft.	175
Quad-IV	4	8	30 ft.	200
Sept-I	7	7	45 ft.	200
Sept-II	7	8	45 ft.	225
Sept-III	9	3	45 ft.	250
Sept-IV	7	10	45 ft.	275
Tri-I	3	3	25 ft.	100
Tri-II	3	4	25 ft.	125
Tri-III	3	5	25 ft.	150
Tri-IV	3	6	25 ft.	175
Uni-I	1	1	15 ft.	50
Uni-II	1	2	15 ft.	75
Uni-III	1	3	15 ft.	100
Uni-IV	1	4	15 ft.	150

SPEED & PROPULSION

Propulsion of an SB is dependant on the number of appendages selected. It wouldn't make sense to have a propulsion system for moving appendages if you chose a Nil-I appendage. The actual description of the propulsion system is purely cosmetic, whether it be an anti-grav generator or synthmuscle to move appendages, the movement is essentially the same (though creative gamemasters may have certain forms of propulsion work differently in specific circumstances). Some forms of propulsion grant a fly speed, swim speed, or both. The propulsion system requires 1 OU to function, which is accounted for in the SB needing 1 OU to be operative. Below is a table of suggested propulsion systems and their minimum required appendages. A damaged propulsion only moves at half speed, a destroyed propulsion means the SB cannot move.

Speeds of SBs is based on frame used and listed in **Frames**.

HP & HARDNESS

All service bots are relatively low HP robots. Calculate SB HP as $5 \times \text{SB Tier}$. Each service bot has $2 + \text{SB Tier}$ hardness. A creature can attempt a DC 22 Strength check or a sunder attempt to break an SB. Any successful attempt at breaking an SB results in the player or GM (whichever was the party attempting to break the SB) choosing a random add-on, the power source, or the propulsion as being broken.

COMPUTER

SBs have a computer (see the "Computers" section of Chapter 7 in the *Starfinder Roleplaying Game: Core Rulebook*) inside of them which accounts for the majority of the cost in any given SB. Most SB computers are relatively simple and cheap with a focus on user interaction and AI personality. All SBs are constructed for sale with root access granted to anyone with a password and scannable badge, operator

PROPULSION METHODS

Method	Min. Appendages	Description
Anti-grav	0	An anti gravity unit that allows the SB to float over any surface that generates even partial gravity. Grants a 30 foot fly speed (good).
Arm Propellor	6	Small propellers attached to each appendage allow for flying or scooting across ground or liquid. Grants a 20 foot fly speed (good) or swim speed (good).
Atmosphere Jets	8	A centralized vacuum chamber connected to ejection ports along each appendage. Grants a 30 foot fly speed (good) or swim speed (good).
Hop Engine	1	A simple piston engine allowing an SB to hop along a solid surface.
Magnetic Tethers	3	Grappling lines ending in strong magnets that allow an SB to swing across anything with an opposed magnetic charge.
Slither	0	Simulated musculature allowing an SB with no appendages to move at a slow pace, whether by bunching up and releasing, rolling, or any other similar method.
Synthmuscle	2	Fake bone, musculature, and tendons to simulate organic walking with the appropriate number of appendages.
Tracks	1	Plated lengths of rubberized teflon around rolling drums.
Wheel	0	The simplest invention of time still persists, allowing an SB to roll along any solid surface.

access is granted to the creature purchasing it. The creature purchasing the SB can hack the computer for root access but risks the computer being wiped if they fail (5% chance of wipe). Creatures purchasing an SB can grant other creatures operator access to the SB. Any creature constructing an SB can determine root access and operator access if they also construct the computer. While not necessary, it is recommended that the player secure the data or purchase some countermeasure against hacking into the SB computer. The computers listed in the pregen service bots assume the most basic computer for that tier.

⚡ POWER SOURCE (PS) & OUTPUT UNITS (OUs)

An SB requires a power source to function, whether that be an internal battery or a visible, small fusion reactor. Regardless of what form the actual power source takes, power sources can power up to a certain tier of SB and a number of add-ons before needing to acquire a higher output power source. The following table provides a list of power sources with their power ranking, what tier SB they can power, and how many output units (OUs) it produces for powering add-ons. An SB always requires 1 OU to function. A power source is typically considered to last 1 week per charge and may be recharged or replaced (see the “Recharging Stations” section or the “Technological Items” section of Chapter 7 in the *Starfinder Roleplaying Game: Core Rulebook*). Additional power sources can be fitted on an add-on slot. A power source that has been damaged only produces

half of its normal OUs and a power source that has been destroyed does not function at all.

Power Sources

Name	SB Tiers	OUs	Price
PS Mk I	1-3	3	100
PS Mk I-A	1-3	4	125
PS Mk I-B	1-3	5	150
PS Mk I-C	1-3	6	175
PS Mk II	1-5	4	200
PS Mk II-A	1-5	5	225
PS Mk II-B	1-5	6	250
PS Mk II-C	1-5	7	275
PS Mk III	1-7	5	300
PS Mk III-A	1-7	6	350
PS Mk III-B	1-7	7	400
PS Mk III-C	1-7	8	450
PS Mk IV	1-9	6	500
PS Mk IV-A	1-9	7	550
PS Mk IV-B	1-9	8	600
PS Mk IV-C	1-9	9	650
PS Mk V	1-10	7	700
PS Mk V-A	1-10	8	800
PS Mk V-B	1-10	9	900
PS Mk V-C	1-10	10	1,000

It is assumed in this book that power sources output all OUs at all times until they need to be recharged or replenished after a week of use. Optionally, you can quadruple the OU rating of each

POWER SOURCES & SPLIT POWER

A power source only needs to meet the minimum tier for powering an SB to make the robot functional. OUs can be split into powering specific add-ons while leaving others inoperative. Changing how OUs are apportioned to an SB's add-ons requires 1 minute for an authorized user or a successful Hacking check. As an example, let's say you decide to purchase a PS Mk I power source and put it into your SB that has a total tier of 3 and total OUs required of 4. The SB would function properly, but you must decide how to split your remaining 2 OUs (remember 1 OU is required for the SB to function) between the add-ons that contribute to its OU requirements which can be changed at a later time with 1 minute of work or a successful Hacking check.

power source and assume that an add-on consumes the listed number of OUs each time it is activated. A power source must have 1 OU remaining to be able to use the propulsion system.

Starship power sources are not expected to be slotted into a service bot. It is entirely the GM's discretion to optionally allow them to be but there is a 1% chance on each add-on activation that the power source is too much the SB explodes into a 10 foot radius blast, dealing 1d6 bludgeoning and piercing and 1d6 fire damage per SB tier (DC 15 Reflex for half). Rigging a service bot to explode like this on purpose requires an arm explosives check using the Engineering skill with a DC of $10 + 2 \times \text{tier of the SB}$, and it always takes one round to charge before exploding.

ADD ONS

Each frame comes with a number of add-on slots that can be used to give an SB some different features that are useful but not necessarily powerful. Each add-on adds $1/2$ tier rounded down to the SB's tier. The following table lists add-ons, slots used, Output Units (OUs) required, price, and brief comment on what the add-on does. Any add-ons can also be placed on a mechanic's drone as a mod for free if under 1,000 credits or for $1/2$ price if above 1,000 credits (unless a similar option already exists for drones, in which case you must use that option instead without GM approval). This is not an exhaustive list, but is meant to give several options and give GMs an idea for what kind of things an add-on should be. Add-ons with 0 slots listed are coatings or special layers applied to the entire service bot. More than one coating can be applied to the same bot, but each is paid for separately. Additional layers of the same type don't increase effectiveness, but instead allow for more uses in one day. The cost of each additional layering however doubles from the previous one (so getting a basic coating once is 1,000 credits, but getting it good for two uses in one day is 2,000 credits, then three uses is 3,000 credits, etc.).

ADDITIONAL RULES CONCERNING SERVICE BOTS

The following section is a grabbag of miscellaneous rules clarifications and discussion of how to use service bots in your game.

EXAMPLE SERVICE BOT CREATION

Anna decides to play a vesk soldier who has a service bot sidekick that she wants to use for storing some extra grenades. Anna starts at level 1 and has 1,000 credits to gear up her vesk soldier and she needs to make some decisions about her service bot. Anna knows that grenades are light bulk, it takes 10 grenades to equal 1 bulk and that is the amount that a storage compartment add-on can hold in an SB. Anna decides to start with the cheapest frame she can get, a Nil-I frame that has 0 appendages and 1 add-on slot for 25 credits. She doesn't plan on using a lot of add-ons for a while so she decides on the cheapest computer and power source, a tier 1 computer for 50 credits and a PS Mk I power source for 100 credits. She throws in a storage compartment add-on to hold her grenades for 50 credits. She decides to go with slither propulsion (completing the image of a grenade carrying metal snake in her mind). She does not need to add anything else at the moment so she spends a total of 225 credits to build; 25 for frame, 50 for computer, 100 for power source, and 50 for add-on. Anna also decides, since her character is a vesk, to default to the vesk racial language and is now happy with her personalized, grenade carrying, snake-looking, and Vesk speaking service bot she aptly names "Boombox."

ACTIONS AC & COMBAT

Service bots are programmed never to harm another creature, are somewhat bulky, and typically don't react to danger to themselves. Their AC is 10 and CMD is 10 unless modified by add-ons. An SB does not have a CMB score. SBs cannot take any action to attack a creature (although wily players can

ADD-ONS

Name	Slots	OUs	Price	Function
Alcohol Dispenser	1	1	200	Adds a tap that may pour up to 10 alcoholic beverages before needing to be refilled. A storage compartment dedicated to this add-on may hold 100 alcoholic beverages.
Atmospheric Container	1	1	250	Adds one hermetically sealed, pressurized compartment and a fitting with ten foot hose with breathing apparatus which allows for 15 non-consecutive minutes of breathing for a creature.
Basic Coating	0	1	1,000	Adds a coating of basic materials to the SB. Grants a +5 energy resistance to acid once per day. Subsequent exposure to acid damage results in the coating being used up in a chemical reaction and it must be replaced.
Bathing Apparatus	4	1	500	Adds four storage compartments with various nozzles, brushes/scrubbers, and cleaning solution tanks. Cleaning medium is recycled after every use.
Blueprint Access	1	1	1,000	Allows an SB to access and store the general layout of the area the computer terminal is located. SB is considered to have a Computers skill of +10 for purposes of hacking to obtain schematics.
Charger	2	2	500	Chamber to place a 1 bulk sized items for recharging once per day.
Cleaning Bays	2	1	150	Adds an electromagnetic brush, dryer vent, and mop tank for cleaning surfaces which also double as a washbasin for clothing.
Cooling Layer	0	1	1,000	Adds a layer of heat dissipating allow to the SB. Grants a +5 energy resistance to fire once per day. Subsequent exposure to fire damage in the same day melts the alloy off and it must be replaced.
Defibrillator	1	1	500	Adds a defibrillator unit that shocks a creature out of the unconscious state.
Entertainment	1	1	500	Each entertainment add-on allows the SB to play one of: Tri-vid shows, music, games, or audio/braille/gesture/video books.
Elastic Joints	1	0	250	Upgraded materials to the joints of the SB provide a more realistic movement and a +1 to the DC to identify it as a robot.
Foam Dampener	0	1	1,000	Composite foam layer to dampen the decibels an SB is exposed to. Grants a +5 energy resistance to sonic. Subsequent exposure to sonic damage results in resonance frequency with the foam and it cracks and falls off requiring it to be replaced.
Holoprojector	1	1	1,500	Mechanism to play audio and video, whether recorded by a holorecorder or from data inserted.
Holorecorder	1	1	1,500	Mechanism to record 1 minute of non-contiguous audio and video.

Holoskin	2	3	200	Adds a holoskin projector that was crafted with a +2 Disguise skill.
Insulation Layer	0	1	1,000	Adds a layer of composite materials providing insulation against low temperatures. Grants a +5 energy resistance to cold once per day. Subsequent exposure to cold damage causes the insulation to become brittle and fall off requiring it to be replaced.
Liftjack	1	1	250	Adds an anti-grav jack capable of lifting 2,500 pounds five feet.
Liquids Purifier	1	1	500	Adds a modified storage compartment with an intake hose and creature specific potability enzymes.
Magnetic Clamps	1	2	50	Appendages or frame is magnetic and can travel in aquatic, low or zero gravity, or vacuums provided there is a metallic surface. Reduces move speed by 5 feet.
Mass Spectrometer	2	2	1,000	A storage compartment paired with a chemical ionizer and analyzer. Grants a +2 circumstance bonus to a Physical Sciences check to recall knowledge about your current surroundings' atmosphere, geography, or geology or to identify where an item analyzed was produced. It takes approximately 1 minute for the mass spectrometer to complete its analysis and must be paired with at least a tier 3 computer.
Medibay	1	1	500	Jet injector connected to a compartment containing 5 units of biologically neutral foam that stops 5 points of bleeding per unit. Foam can be refilled for 1/2 the cost of the medibay.
Mini Teleport	2	3	5,000	Small teleport bay (big enough to fit 1 bulk of item or 5 negligible bulk items) that is paired with a corresponding transporter somewhere else. Must have quantum comms and storage compartment add-ons as well as at least a tier 4 computer to function. May only be used once per day. If using to purchase items, credits must be transferred first via quantum comms.
Non-Conductive Coating	0	1	1,000	Coats the inner circuitry and outer shell of an SB to protect it from electricity. Grants +5 energy resistance to electricity against one source of electricity damage once per day. Subsequent sources of electricity damage in a single day will melt the non-conductive coating and it must be reapplied.
Omnidirectional Thrusters	2	2	1,500	Upgrades stock mini-thrusters to give a 30 foot (good) fly or swim speed.
Omnitool	1	1	200	Adds an omnitool attachment which provides a +2 circumstance bonus to repairing or crafting mundane items.
Pursuit Deterrent	1	0	150	Adds a small storage space to store enough caltrops, marbles, oil, or any other 1 bulk or less items which can be released into a 5 foot square with a programmed signal from the SB operator.
Quantum Comms	1	2	15,000	Near instantaneous and near infinite (on the same plane) verbal communication with a single transceiver.

Realistic Skin	1	0	200	Adds realistic feeling skin or exoskeleton to the service bot granting a +2 Disguise bonus whenever a creature attempts to check if it is a real creature.
Scanning Array	2	1	500	Series of small scanner arrays to allow SB to detect movement out to a 50 foot diameter. Each additional scanning array increases the distance by 25 feet.
Sealed Design	0	1	1,000	This service bot has been sealed against water, gas, and vacuum, and can survive underwater, in deep space, or other harmful conditions without damage for long periods of time. For each day of total exposure to one condition, there is a cumulative 1% chance the seals will break, with a 100% chance after 100 days. After cracking, a seal must be reapplied.
Shovel Scoop	2	1	1,000	A big shovel and scoop on a multi-angle telescopic arm. This can dig or move up to one hundred pounds of materials ten feet at a time.
Storage Compartment	1	0	50	Compartment to store a single 1 bulk items or 5 negligible bulk items at any temperature from freezing to boiling.
Sustenance Condenser	1	1	500	Specialized storage compartment in which raw ingredients can be fed and sustenance similar to field rations but with a limited selection of flavors.
Translator	1	1	1,500	Adds one language with which an SB may communicate.
Turbo	2	2	2,500	Increase move speed of SB by 10 feet.
Waste Collection	1	1	250	Adds one storage compartment with creature specific toilet and folding privacy screens. All waste is first evaluated for fuel use and stored. Gaseous waste is dispersed at operator set times, liquid waste is dispersed at an operator set times, and solid waste is enzymatically broken down. If an entertainment add-on is also installed then operator preferred music is played while privacy screens are unfolded.
Zero-G Thrusters	1	1	500	Adds mini-thrusters that are only truly effective in zero-g, granting the SB an effective fly speed of 30' (perfect) in that environment, but are ineffective in any gravity.

order them to activate/deactivate something that may cause damage to a creature). An SB can only take a move action or a standard action (or substitute for a move action) in a round, it cannot take a both standard and move action, full action, reaction, or swift action (at least, barring GM approval). Giving your SB an order does not require an action unless the controller interface does not include gesture or verbal. For example, if your SB only has a tactile interface you would need to touch it to give it an order and would require a move action.

This book assumes service bots cannot directly harm another creature via attacking it with a weapon or its frame, regardless of whether your SB was built by you, if it was bought, or if it was hacked to its root access. This does not exclude actions such as instructing your SB to flip a switch that causes a door to close on a creature or actions like that. You are free to change this in your own games but some work must be done to calculate starting ability scores, skills, feats, and things of that nature. Be careful not to overshadow the mechanic's artificial intelligence class ability or you can grant all of the add-ons for free (or severely reduced price) to the mechanic's artificial intelligence.

EXTRAORDINARY DAMAGE

Service Bots are not meant to be in combat but it is inevitable that they will take damage from some source throughout their existence. Anytime an SB takes 1/4 of its hit points from a single source of damage roll from the table below and determine if any add-ons, computer, propulsion, or power source are broken. Anytime an SB without the non-conductive coating add-on takes electricity damage roll on the table below to determine if any add-ons, computer, propulsion, or power source short out for 1d10 minutes.

Extraordinary Damage	
%	System Affect
1-25	One add-on is destroyed and must be replaced.
26-50	Computer is damaged and must be repaired for 1/2 of its cost. Subsequent roll on this results in the computer being destroyed.
51-75	Propulsion is damaged and must be repaired. Subsequent roll on this results in the propulsion being destroyed.
76-100	Power source is damaged and must be repaired. Subsequent roll on this results in the power source being destroyed.

INITIATIVE

SBs are typically independently moving creatures controlled by a player. This book assumes that a service bot will act on the same turn as the PC owner of the SB, but you may always roll for initiative for your SB. If you choose to roll for initiative for the SB, it has an initiative score equal to its tier.



RIDING SERVICE BOTS AS MOUNTS

An SB can be ridden like a tamed animal or used as a mobile litter, provided the PC is no more than one size category larger for riding or two size categories larger for dragging than the SB. This can be accomplished either through a DC 8 Piloting check or a Survival check for handling an animal substituting SB tier for CR (see the table in the “Survival” section of Chapter 5 in the *Starfinder Roleplaying Game: Core Rulebook*). Encountering situations in which you are pitched or otherwise are caused to fall off of your SB mount results in 1d6 points of falling damage plus 1d6 points of falling damage for every ten feet fallen.

SBs move in odd fashions and as an optional set of rules, can cause unwanted reactions to riding them for long periods. Every hour riding an SB, roll 1d6 on the table below for a potential condition.

SB Riding Conditions		
Roll	Condition	Effect
1	Saddle sore	Gain the fatigued condition for 1d10 minutes upon dismount.
2	Motion sick	Gain the sickened condition for 1d10 minutes upon dismount.
3	Muscle cramp	Gain the entangled condition for 1d4 minutes upon dismount.
4	Vection	Gain the off-target condition for 1d4 minutes upon dismount.
5	Tangled up	Gain the entangled condition for 1d4 minutes upon dismount.
6	Atrophy	Gain the encumbered condition for 1d10 minutes upon dismount.

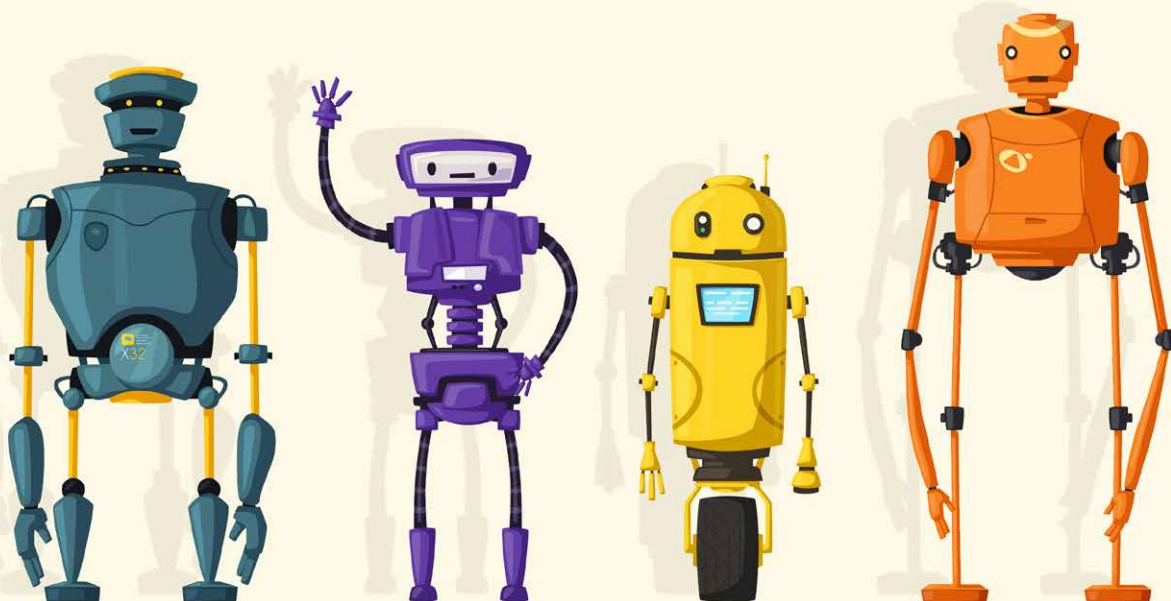
This is an entirely optional ruleset but can add flavor to the action of riding an SB. Each condition is additive and cumulative; if you ride an SB for three hours then roll three times on the table and you gain each of the effects or add the minutes together each time you roll the same effect. The effects can also begin while the character is still on the mount and then continue after they have dismounted for the listed amount of time (GM discretion).

WEIGHT & ENCUMBRANCE

Service bots are relatively bulky for their size, 1 bulk for Small or Medium sized plus 1/2 bulk for each add-on. SBs are assumed to never be encumbered and can carry up to 2,500 lbs. Exceeding this carry capacity causes a 5% plus 1% for every two pounds over maximum carry capacity chance per movement speed for it to be broken from the weight.

MECHANICS USING THEIR AIs TO CONTROL SERVICE BOTS

The mechanic class possesses the artificial intelligence class ability that can take the form of a drone or an exocortex. An SB can be integrated into this class feature using either of those distinctions. If integrating with a mechanic's drone, simply add a free add-on slot as a place to slot each drone mod and the SB takes on the statistics of the base chassis and drone base statistics. If integrating with an exocortex, your SB is considered to be remotely and telepathically (range of 15 feet per level) controlled by your exocortex as well as being able to bestow your consciousness (with full access to your class abilities and skills) onto your SB by loading your exocortex into it. Your normal body becomes inert at this point, still ages normally, and still maintains all of its normal processes.



SERVICE BOT MANUFACTURERS

There are several SB manufacturers in the universe and each one prides itself on different things. Each manufacturer gives a slight variation on service bots sold, a QBCP Corp Diplobot may be cheaper than a HiTech LLC Diplobot but has 1/2 per tier (rounded down) less bonus to Diplomacy checks. The following SB manufacturers are the most common and likely have a distribution center in any sufficiently populous region of space. If you are currently in a manufacturer's headquarters sector, assume they are the dominant brand of SB and their listed rival company is virtually non-existent in stores. It could be a good plot hook to have corporate espionage or a smear campaign currently being conducted by a rival company in any manufacturer's headquarters sector.

It is assumed that your game takes place in a universe where service bots are commonplace and as such there is advertising everywhere for them. Sometimes the advertising can be as simple as a small jingle on an audio-only channel of the quantum entertainment networks or it can be as obnoxious as multiple calls and messages from robo dialers. Judge your advertising by your group's and GM's desires but sometimes it can be fun to just highlight corporate influence in certain sectors or even seed an adventure by using a lot of advertising for the various manufacturers.

While later in the book a hundred different pre-fabricated service bots are presented, any of these companies will create a custom-design bot for the price calculated using the methods presented above, though alternate means of making bots is also discussed below (see sidebar).

FRIENDLY FACE SERVICE BOTS

Company Slogan: *Put a Friendly Face by your side and you'll never want for a companion!*

Manufacturer Bonus +1/2 to Diplomacy checks per tier

Manufacturer Drawback 5% chance holoskin DC is 0 when a creature attempts to disbelieve it

Friendly Face Service Bots is the prime manufacturer of service bots that are modelled after the average composite for any given species. Each Friendly Face SB belongs to a species line with a typical number of appendages for that species and most often comes with a holoskin projector or realistic skin installed, to the dismay of many androids. The manufacturer is a privately owned business and its sole proprietor is a notorious recluse whose likeness is not on any public record.

COPYRIGHTS & TRADEMARKS

Copyrighting and trademarking does exist for service bot names and their product numbers but typically is only legal within galactic sectors it is negotiated and only enforceable within those sectors. It is often quicker and cheaper for a manufacturer to handle copyright or trademark infringement in their own way. There have been multiple trade wars in the past between manufacturers, sometimes quite literally. Typically a trade war is more clandestine involving corporate espionage, blackmail, or even psychically implanted instructions in key members' brains.

HiTech (HT) LLC

Company Slogan: *If you're looking for high tech, then look for a HiTech!*

Manufacturer Bonus +1 add-on slot to all frames (does not increase overall SB tier)

Manufacturer Drawback 5% chance add-on fails for 1d4 minutes on each use

HiTech is the consumer arm of the Service Bot Standard corporate umbrella. Their SBs are loosely modelled after the military units produced by their governmental contracting arm, DefenseTech. HiTech SBs are usually utilitarian in appearance but support a vast array of different add-on combinations from helping with abode cleaning to storing interesting objects. HiTech is well known for having the most add-on slots on their frames than any other manufacturer but their operating systems don't always have the bugs worked out.

QBCP CORP

Company Slogan: *The right price for the right service bot!*

Manufacturer Bonus 10% off price of SB total

Manufacturer Drawback 5% chance service bot doesn't recognize operator for 1d4 minutes on add-on each use

Quality Bots @ Cheap Prices rebranded themselves as "QBCP" several years ago when a new CEO was appointed in an attempt to distance the company from a particularly nasty series of recalls across all their models of service bot. The power source slot of their frames was incorrectly installed due to a worker revolt and subsequent strikebreaker hires and caused small explosions that maimed several customers and even killed a few. While their service bots have not had any issues of that nature since the new CEO was appointed, factory conditions still haven't improved much. QBCP is known for being a knock-off brand for lower income beings and doesn't shy away from aggressively advertising its low prices in every competitor's headquarters sector.

SOCROSOFT INTERGALACTIC

Company Slogan: *Entertainment that can go wherever you go!*

Manufacturer Bonus Free entertainment add-on (counts towards overall SB tier)

Manufacturer Drawback 5% chance entertainment add-on overheats SB for 1d4 minutes on each use

Socrosoft Intergalactic is the result of the hostile acquisition that occurred between two of the largest entertainment titans, Sonoy and Nanosoftware, in recent years. Many millions of workers were displaced from both companies which has led to some strong resentment in several sectors. The resulting, monopolistic company immediately began production on entertainment focused SBs. This fast paced acquisition and immediate manufacturing has led to improper heat dissipation from the power source slot and computer slot, but the company is denying this and continues to pump out units with the defect.

TUFFMADE (TM) SOLUTIONS

Company Slogan: *Only a TuffMade is made tough!*

Manufacturer Bonus +5 HP to SB

Manufacturer Drawback Speed is reduced by 5 feet

TuffMade Solutions has cornered the market on young-proof and adventure ready SBs. Their models run the gamut of add-ons but are typically made from thicker, heavier materials as well as having brightly colored, soft-but-tough materials covering the frame. This manufacturer has boldly claimed "We'll refund any of our service bots that break," which has largely been a successful campaign, but some customers have managed to break their TuffMade SB and have been forced to learn the concept of fine print.

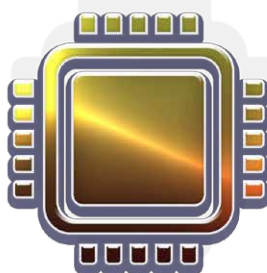
DIY & HOMEMADE SERVICE BOTS

Do-It-Yourself (DIY) kits are sold by all the major manufacturers. They come with two advantages; first, they are cheaper than buying a fully functional service, and second, you can — if skilled enough — remove the drawback but keep the benefit of a manufacturer. An unassembled, unprogrammed service bot can be purchased for 80% the normally listed price of the SB. But, to put the bot together requires an Engineering check against a DC of $10 + 2 \times \text{tier of the bot}$, and a separate Computers check against a DC of $5 + \text{tier of the computer} \times \text{tier of the bot}$ to program it. Each add-on increases the DC by +1 for both checks, and gamemasters should adjust DCs or add additional checks to do other things to their SBs like giving them a kickbutt paint job (a Profession (artist) check). Note though, any “custom modifications” that would remove the defect also voids any and all warranties a company may offer. To build a service bot from a kit without its manufacturer’s drawback, you must make a separate Engineering check against the normal DC to build the bot +10, and spend 5% of the normal price of the bot to use superior parts. This check can only be made once and failure means the bot has the drawback still, despite the better components. Failure by more than 5 means the drawback is twice as bad (for instance, happening 10% of the time or lasting twice as long). DIY kits typically take 1 hour to put together per tier of the service bot and 1 additional hour per tier of the computer to program.

Homemade service bots are either built completely from scratch or can be made using a chimera of parts from many manufacturers. In either case, the degree of difficulty is much higher, requiring an Engineering check against a DC of $20 + 2x \text{ tier of the bot}$, and a separate Computers check against a DC of $10 + \text{tier of the computer} \times \text{tier of the bot}$ to program it. To give an SB a benefit similar to any manufacturer, you increase this DC by +10. For homemade SBs, you can otherwise follow the rules for crafting equipment found at the end of Chapter 7 in the *Starfinder Roleplaying Game Core Rulebook*.



Friendly Face
Service Bots



HiTech (HT)
LLC



QBCP Corp



TuffMade (TM)
Solutions



Socrosoft
Intergalactic

PLOTS & RUMORS

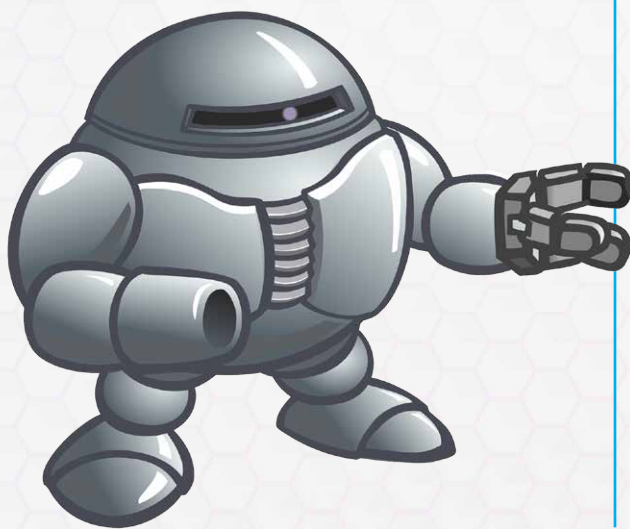
To aid Gamemasters in their use of this book, the following plot ideas, adventure hooks, and rumors about manufacturers, service bots, and other related things are included here to help spark your imaginations for innovative uses for service bots in your game.

An Unexpected Find: A defunct service bot was found in a caustic environment. When repaired and recharged it played a slightly garbled holoprojection message containing plans for a massive destructive space station.

Bended Bots: SBs that are delivered to a certain region of a planet are reported as being bent into strange and occult shapes when the package is opened.

Explosive Storage: Someone is building SBs with grenades inside their storage compartments and the grenade triggers tied to the storage compartment cover and sending them to manufacturer headquarters.

Last Will and Testament: A holorecorder on an SB that was delivered to you from a mysterious source claims to contain the last will and testament to senior member of a manufacturer.



Lost in Translation: The translator add-on of a protocol SB contains an insidious subroutine that broadcasts a virus to any synthetic life forms within hearing range.

Medical Malpractice: SBs from a certain production run of a specific manufacturer equipped with a medibay marked for a specific species is causing deadly, adverse reactions when used.

Poisoned Models: A certain line of service bots equipped with cleaning bays have been discovered with a deadly poison lining the cleaning medium tank.

Profit Mongering: A certain SB retailer in your galactic sector is selling service bots with any extreme condition layering scraped off but at the same price.

Quantum Quandary: The quantum comms of a service bot sold to you at a flea market are connected to a distant source that speaks of incomprehensible things which slowly drives creatures insane.

Smear Campaign: All of the advertisement holograms of a certain manufacturer have been hacked by re-programmed SBs to denounce the quality and business practices of that manufacturer.

Weird Warnings: The entertainment unit of a premiere model SB randomly scrambles and gives a warning about terrible happenings at a manufacturer factory.

Xenologic Discovery: The blueprint access and holoprojector of an SB found floating in space depict a structure and creature never before seen by the scientific community.

EXAMPLE SERVICE BOTS

The following are pregenerated service bots of varying tiers and price.

⚡ TIER 1

Tier 1 SBs

Name	Price
Cleaner-HT	325
CleanyBot	293
FC1 Galatea	500
FC1 Sibyl	275
Lifter-HT	450
PetsyBot	248
Socrosoft XPlay1	275
Socrosoft XPlay1 S	175
TM-SB1	225
TM-SB1P	250

CLEANER-HT

TIER 1

Price 325

Small zero-armed nil-I slither voice-operated service bot

Speed 10 ft. (slither propulsion)

HP 5; **Hardness** 3

SYSTEMS

Computer tier 1; **Power Source** PS Mk I (3 OU)

Control Interface voice; **Language** Common

Manufacturer HiTech (+1 add-on, 5% add-on fail 1d4 mins)

ADD-ONS

cleaning bays

This model is a HiTech cleaning specialty. No other major manufacturer is able to provide this sanitation SB at this price point. Some complaints have been lodged regarding the sporadic failure of the cleaning bay add-on but within an acceptable range of customer satisfaction. Future updates to this line should investigate the matter but it is not a top priority.

CLEANYBOT

TIER 1

Price 293

Small zero-armed nil-I slither voice-operated service bot

Speed 10 ft. (slither propulsion)

HP 5; **Hardness** 3

SYSTEMS

Computer tier 1; **Power Source** PS Mk I (3 OU)

Control Interface voice; **Language** Common

Manufacturer QBCP (10% cheaper, 5% operator not recognized 1d4 mins)

ADD-ONS

cleaning bays

The QBCP CleanyBot is your alternative to more expensively priced service bots! Ordering one of these SB's can be done any number of ways and the price can be broken into three easy payments! Act now and this service bot can be yours plus two refills on the cleaning solution absolutely free while supplies last!

FC1 GALATEA**TIER 1****Price** 500

Small four-armed quad-I synthmuscle gesture/
voice-operated service bot

Speed 30 ft. (synthmuscle propulsion)**HP** 5; **Hardness** 3**SYSTEMS****Computer** tier 1; **Power Source** PS Mk I-A (4 OU)**Control Interface** gesture/voice; **Language**
Common**Manufacturer** Friendly Face (+1/2 Diplomacy/tier,
5% DC o holoskin)**ADD-ONS**

holoskin

The FC1 Galatea is the first model Friendly Face Service Bots mass produced. It is a basic humanoid appearing SB with a holoskin add-on programmed to mimic the composite of beauty for the species of the operator. Typically, Galatea is programmed to be infatuated with xyr operator.

FC1 SIBYL**TIER 1****Price** 275

Medium four-armed quad-1 synthmuscle
gesture/voice-operated service bot

Speed 30 ft. (synthmuscle propulsion)**HP** 5; **Hardness** 3**SYSTEMS****Computer** tier 1; **Power Source** PS Mk I (3 OU)**Control Interface** gesture/voice; **Language**
Common**Manufacturer** Friendly Face (+1/2 Diplomacy/tier,
5% DC o holoskin)

The FC1 Sibyl is a canine shape and is the only model not to include a holoskin or any add-ons to provide a cheaper SB for the vision impaired. The plastic-like outer shell is molded in a best attempt at looking like a pet but xe is still unmistakably a robot.

LIFTER-HT**TIER 1****Price** 450

Small one-armed uni-I hop engine voice-
operated service bot

Speed 15 ft. (hop engine propulsion)**HP** 5; **Hardness** 3**SYSTEMS****Computer** tier 1; **Power Source** PS Mk I(3 OU)**Control Interface** voice; **Language** Common**Manufacturer** HiTech (+1 add-on, 5% add-on fail
1d4 mins)**ADD-ONS**

liftjack

HiTech model Lifter-HT is a single appendage piston shaped service bot designed specifically to shift detritus out of any creature's way. Extensive field testing resulted in the recommendation of magnetic clamps for low and zero gravity environments and in aquatic environments. Damaging environments, i.e. acidic or highly fluctuating temperatures, are a weakness in this particular model.

PETSYBOT**TIER 1****Price** 248

Small four-armed quad-I synthmuscle gesture/
voice-operated service bot

Speed 30 ft. (synthmuscle propulsion)**HP** 5; **Hardness** 3**SYSTEMS****Computer** tier 1; **Power Source** PS Mk I (3 OU)**Control Interface** gesture/voice; **Language**
Common**Manufacturer** QBCP (10% cheaper, 5% operator
not recognized 1d4 mins)

PetsyBot is a creature's best friend! The four, you saw that right, FOUR appendages and pet shape make this an absolute must have for your nearest holiday! Supplies are limited so you'd best contact us and order now!

SOCROSOFT XPLAY1**TIER 1****Price** 275

Medium four-armed quad-l wheeled gesture/
voice-operated service bot

Speed 30 ft. (wheel propulsion)**HP** 5; **Hardness** 3**SYSTEMS****Computer** tier 1; **Power Source** PS Mk I (3 OU)**Control Interface** gesture/voice; **Language**
Common**Manufacturer** Socrosoft (+1 entertainment/5%
overheats 1d4 mins)**ADD-ONS**

entertainment

The Socrosoft XPlay1 is the entry level entertainment SB. This service bot, like all Socrosoft models, comes equipped with an entertainment add-on of their popular games machine. This model does not allow for local multiplayer and comes with a special demo game program to showcase its capabilities.

SOCROSOFT XPLAY1 S**TIER 1****Price** 175

Small zero-armed nil-l gesture/voice-operated
service bot

Speed 0 ft. (no propulsion)**HP** 5; **Hardness** 3**SYSTEMS****Computer** tier 1; **Power Source** PS Mk I (3 OU)**Control Interface** gesture/voice; **Language**
Common**Manufacturer** Socrosoft (+1 entertainment/5%
overheats 1d4 mins)**ADD-ONS**

entertainment

The Socrosoft XPlay1 S is designed to be worn as a watch or about the body. This model does not move on its own and must be carried or worn but

it allows access to its gaming network (subscription not included in price) wherever you go. Attachable appendage band not included.

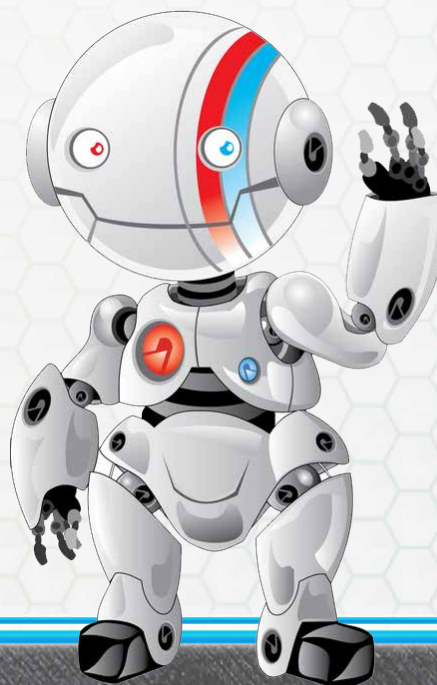
TM-SB1 "TUFF STUFF"**TIER 1****Price** 225

Small zero-armed nil-l slither voice-operated
service bot

Speed 5 ft. (slither propulsion)**HP** 10; **Hardness** 3**SYSTEMS****Computer** tier 1; **Power Source** PS Mk I (3 OU)**Control Interface** voice; **Language** Vesk**Manufacturer** TuffMade (+5 HP, -5 ft.)**ADD-ONS**

storage compartment

The TM-SB1, or "Tuff Stuff," is an ophidian shaped service bot with a storage compartment, allowing for up to ten negligible bulk items or a singular one bulk item to be stored for easy retrieval. The first generation of this model has a fairly slow opening door to its storage compartment which since been upgraded. This model is the cornerstone of TuffMade Solutions.



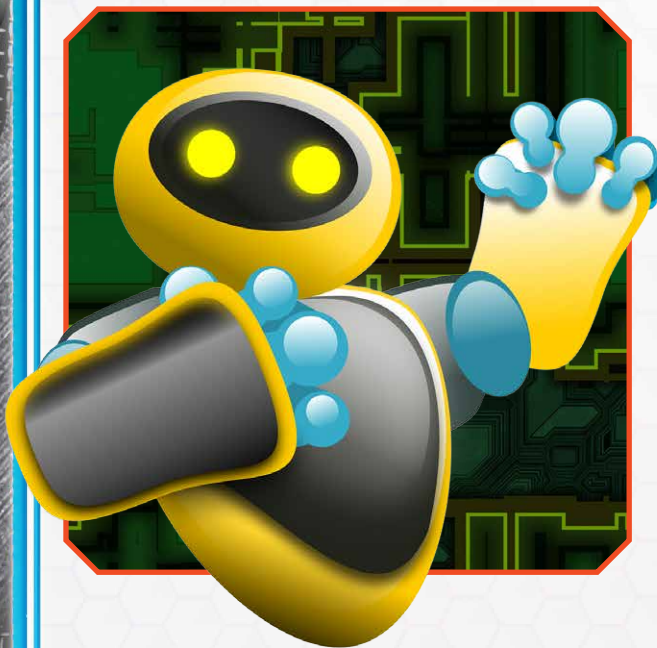
TM-SB1P "POGO"**TIER 1****Price** 250

Small one-armed uni-I hop engine voice-operated service bot

Speed 10 ft. (hop engine propulsion)**HP** 10; **Hardness** 3**SYSTEMS****Computer** tier 1; **Power Source** PS Mk I (3 OU)**Control Interface** voice; **Language** Common**Manufacturer** TuffMade (+5 HP, -5 ft.)**ADD-ONS**

storage compartment

The TM-SB1P, nicknamed "Pogo," was an attempt to capture broader markets with a service bot that wasn't ophidian, unfortunately the hop engine produced a motion that often left customers with disabled or broken pieces instead of nicely stored items. This unit is still fairly popular among young creatures as a bouncing noise maker.

**TIER 2****Tier 2 SBs**

Name	Price
Breather-HT	825
BreathlessBot	743
CareBot	945
Detection-HT	1,125
FC2 Asclepius	1,050
FC2 Clytae	725
Socrosoft XPlay2	1,200
Socrosoft XPlay2 Ex	1,275
TM-SB2	300
TM-SBMag	300

BREATHER-HT**TIER 2****Price** 825

Small zero-armed nil-III anti-grav voice-operated service bot

Speed 10 ft. (anti-grav propulsion)**HP** 10; **Hardness** 4**SYSTEMS****Computer** tier 1; **Power Source** PS Mk I (3 OU)**Control Interface** voice; **Language** Common**Manufacturer** HiTech (+1 add-on, 5% add-on fail 1d4 mins)**ADD-ONS**

atmospheric container x2, storage container x2

Breather-HT is designed for two creature teams to explore and collect samples from environments inhospitable to those who breathe atmosphere. Shaped as a floating ball, the storage compartments are meant to house extra long tubing for the atmospheric containers so the creature teams aren't too closely connected. This allows for greater area of catalogue until the atmospheric containers need to be refilled.

BREATHLESSBOT**TIER 2****Price** 743

Small zero-armed nil-III anti-grav voice-operated service bot

Speed 10 ft. (anti-grav propulsion)**HP** 10; **Hardness** 4**SYSTEMS****Computer** tier 1; **Power Source** PS Mk I(3 OU)**Control Interface** voice; **Language** Common**Manufacturer** QBCP (10% cheaper, 5% operator not recognized 1d4 mins)**ADD-ONS**

atmospheric container x2, storage container x2

Don't hold your breath! The BreathlessBot is your emergency loss of atmosphere SB! This model can accommodate two separate species with its atmospheric containers and the onboard storage containers can hold extra tubing or an atmospheric refill. You don't want to be caught out in space without your breathing buddy bot!

CAREBOT**TIER 2****Price** 945

Medium five-armed pent-I wheeled gesture/tactile/voice-operated service bot

Speed 35 ft. (wheel propulsion)**HP** 10; **Hardness** 4**SYSTEMS****Computer** tier 1; **Power Source** PS Mk I-B (5 OU)**Control Interface** gesture/tactile/voice; **Language** Common**Manufacturer** QBCP (10% cheaper, 5% operator not recognized 1d4 mins)**ADD-ONS**

holoskin, medibay

Look at the multifunctioning utility of the CareBot! With five appendages and a medibay, this holoskinned service bot can help you with any of your

everyday tasks you might find challenging. Feeling cold? CareBot turn up your thermostat! Having trouble opening a drink container? The CareBot can unscrew the lid without problem! This model is just what the doctor ordered!

DETECTION-HT**TIER 2****Price** 1,125

Small zero-armed nil-IV slither voice-operated service bot

Speed 10 ft. (slither propulsion)**HP** 10; **Hardness** 4**SYSTEMS****Computer** tier 1; **Power Source** PS Mk I-A(4 OU)**Control Interface** voice; **Language** Common**Manufacturer** HiTech (+1 add-on, 5% add-on fail 1d4 mins)**ADD-ONS**

pursuit deterrent x2, scanning array, storage compartment

The model branded Detection-HT is designed to move ahead of its operator to detect movement and if judged to be threatening, lead the source of movement away, and confound with pursuit deterrence. Future updates to this model are already planned with garish coloration to better suit primary function.

FC2 ASCLEPIUS**TIER 2****Price** 1,050

Medium five-armed pent-I wheeled gesture/tactile/voice-operated service bot

Speed 35 ft. (wheel propulsion)**HP** 10; **Hardness** 4**SYSTEMS****Computer** tier 1; **Power Source** PS Mk I-B (5 OU)**Control Interface** gesture/tactile/voice; **Language** Common

Manufacturer Friendly Face (+1/2 Diplomacy/tier, 5% DC o holoskin)

ADD-ONS

holoskin, medibay

The FC1 Asclepius is a caregiving model programmed to provide a wide range of care in the home or out in the cosmic vastness. The various appendages are configured to push a hoverchair or provide a stable leaning surface. This model always comes packaged with a loud buzzer or siren in case of medical emergency.

FC2 CLYTAE

TIER 2

Price 725

Small four-armed quad-I synthmuscle gesture/voice-operated service bot

Speed 30 ft. (synthmuscle propulsion)

HP 10; **Hardness** 4

SYSTEMS

Computer tier 1; **Power Source** PS Mk I (3 OU)

Control Interface gesture/voice; **Language** Common

Manufacturer Friendly Face (+1/2 Diplomacy/tier, 5% DC o holoskin)

ADD-ONS

elastic joints, realistic skin

The FC1 Clytae was developed not only to be companionable but to provide the tactile sensations of a real creature. A miscommunication during the design phase of this SB resulted in a default personality that is slightly violent in its communication. This seeming flaw has actually caused somewhat of a marketing sensation and has made xem a popular model amongst the rougher sectors of creatures.

SOCROSOFT XPLAY2

TIER 2

Price 700

Small zero-armed nil-II slither gesture/voice-operated service bot

Speed 10 ft. (slither propulsion)

HP 10; **Hardness** 4

SYSTEMS

Computer tier 1; **Power Source** PS Mk I (3 OU)

Control Interface gesture/voice; **Language** Common

Manufacturer Socrosoft (+1 entertainment/5% overheats 1d4 mins)

ADD-ONS

entertainment x2

The Socrosoft XPlay2 is a local multiplayer game SB and entertainment specialist. This model comes equipped with two separate entertainment units allowing for simultaneous two player interaction. The dual entertainment add-ons also allow two people to enjoy separate hologramming or music without needing to fight about which channel to watch or listen to.

SOCROSOFT XPLAY2 EX

TIER 2

Price 775

Small zero-armed nil-III slither gesture/voice-operated service bot

Speed 10 ft. (slither propulsion)

HP 10; **Hardness** 4

SYSTEMS

Computer tier 1; **Power Source** PS Mk I (3 OU)

Control Interface gesture/voice; **Language** Common

Manufacturer Socrosoft (+1 entertainment/5% overheats 1d4 mins)

ADD-ONS

entertainment x2, storage compartment

The Socrosoft XPlay2 Ex has all the features of the XPlay2 but with added storage for your physical form media or for your game controllers. The special storage compartment comes with moldable foam to keep your entertainment physical media separated and safe. A special hole has been drilled into the storage compartment to run cabling for extra cooling or for reactive lighting.

TM-SB2 "DOUBLE TUFF" TIER 2

Price 300

Small zero-armed nil-II slither voice-operated service bot

Speed 5 ft. (slither propulsion)

HP 15; **Hardness** 4

SYSTEMS

Computer tier 1; **Power Source** PS Mk I (3 OU)

Control Interface voice; **Language** Vesk

Manufacturer TuffMade (+5 HP, -5 ft.)

ADD-ONS

storage compartment x2

The TM-SB2, or "Double Tuff," is an increased capacity model of the TM-SB1. Due to the increase in storage capacity a sturdier frame was chosen as the base for this model. Some customers report slight dissatisfaction with noise from storing items in both of the compartments. Current models have packing material included with storage compartments to prevent this.

TM-SBMAG "MAGBALL" TIER 2

Price 300

Small zero-armed nil-II voice-operated service bot

Speed 0 ft. (no propulsion)

HP 10; **Hardness** 4

SYSTEMS

Computer tier 1; **Power Source** PS Mk I (3 OU)

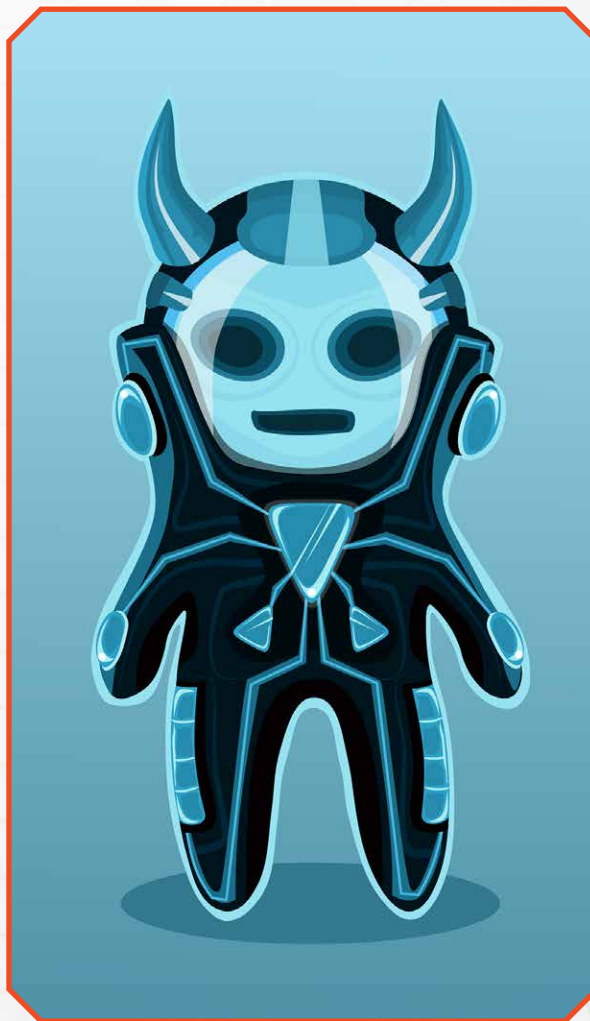
Control Interface voice; **Language** Vesk

Manufacturer TuffMade (+5 HP, -5 ft.)

ADD-ONS

magnetic clamps, storage compartment

The TM-SBMag, also known as "Magball," was developed in response to customer dissatisfaction surveys from areas in primarily aquatic and low or zero gravity environments. The magnetic clamps add-on allow xem to move with its operator on a variety of metallic surface angles, although there is a tendency for objects stored in its compartment to float out when xe is orientated upside down.



TIER 3

Tier 3 SBs

Name	Price
Analyzer-HT	1,925
FC3 Delphic	1,300
FC3 Demaratus	3,850
Fixer-HT	800
Socrosoft XPlay	3x22,325
Socrosoft XPlay3x2	3,800
SpaceBot	608
SurveyBot	1,733
TM-SBQMed	1,450
TM-SBSW	675

ANALYZER-HT

TIER 3

Price 1,975

Small four-armed quad-II wheeled voice-operated service bot

Speed 30 ft. (wheel propulsion)

HP 15; **Hardness** 5

SYSTEMS

Computer tier 1; **Power Source** PS Mk I-A (4 OU)

Control Interface voice; **Language** Common

Manufacturer HiTech (+1 add-on, 5% add-on fail 1d4 mins)

ADD-ONS

liquids purifier, mass spectrometer, storage compartment x3

This field research model, the Analyzer-HT, is designed to accompany a scientist or amateur into the field and capably analyze unknown substances. Initial models used synthmuscle propulsion but results found that did not work well with mass spectrometer and liquids purifier add-ons on the same unit.

FC3 DELPHIC

TIER 3

Price 1,300

Medium four-armed quad-II synthmuscle gesture/tactile/voice-operated service bot

Speed 30 ft. (synthmuscle propulsion)

HP 15; **Hardness** 5

SYSTEMS

Computer tier 1; **Power Source** PS Mk I (3 OU)

Control Interface gesture/tactile/voice; **Language** Common

Manufacturer Friendly Face (+1/2 Diplomacy/tier, 5% DC o holoskin)

ADD-ONS

elastic joints, entertainment, realistic skin, storage compartment

The FC3 Delphic is designed to be a musical companion with realistic appendage movement and built-in storage for musical instruments. While not a virtuoso, xe is programmed with over a million instrumental and vocal arrangements that is beautifully played or sang.

FC3 DEMARATUS

TIER 3

Price 3,850

Small seven-armed sept-I slither voice-operated service bot

Speed 45 ft. (slither propulsion)

HP 15; **Hardness** 5

SYSTEMS

Computer tier 1; **Power Source** PS Mk I-B (5 OU)

Control Interface voice; **Language** Common;

Manufacturer Friendly Face (+1/2 Diplomacy/tier, 5% DC o holoskin)

ADD-ONS

elastic joints, holoprojector, holorecorder, holoskin

The FC3 Demaratus is the consumer model of their military spying service bot. Lacking much of the

tactical accoutrements of its military counterpart, FC3 Demaratus does retain a holographic recording device, a holographic projector, and holoskin configured to blend with a variety of surfaces commonly encountered in starships and space stations.

FIXER-HT

TIER 3

Price 850

Small four-armed quad-II synthmuscle voice-operated service bot

Speed 30 ft. (synthmuscle propulsion)

HP 15; **Hardness** 5

SYSTEMS

Computer tier 1; **Power Source** PS Mk I (3 OU)

Control Interface voice; **Language** Common

Manufacturer HiTech (+1 add-on, 5% add-on fail 1d4 mins)

ADD-ONS

omnitool x2, storage compartment x3

The Fixer-HT model is designed for use by engineers in field needing to fix doorways, plumbing systems, or any other various mechanical accoutrements. The storage compartments in these are configured to have molded tool holders and the dual omnitool add-ons allow for multiple operators to work on the same device.

SOCROSOFT XPLAY3

TIER 3

Price 2,325

Small zero-armed nil-IV slither gesture/voice-operated service bot

Speed 10 ft. (slither propulsion)

HP 15; **Hardness** 5

SYSTEMS

Computer tier 1; **Power Source** PS Mk I-A (4 OU)

Control Interface gesture/voice; **Language** Common

Manufacturer Socrosoft (+1 entertainment/5% overheats 1d4 mins)

ADD-ONS

entertainment x2, holoprojector, storage compartment

The Socrosoft XPlay3 is a leap in immersive entertainment service bots. This model comes standard with all of the XPlay2 and adds a holoprojector add-on. This addition allows one operator to have their entertainment projected out into a room with extreme verisimilitude. Any injuries from playing a game with the holoprojector turned on is solely the liability of the operator.

SOCROSOFT XPLAY3x2

TIER 3

Size Small; **Tier** 3; **Price** 3,800

Small zero-armed nil-IV slither gesture/voice-operated service bot

Speed 10 ft. (slither propulsion)

HP 15; **Hardness** 5

SYSTEMS

Computer tier 1; **Power Source** PS Mk I-B (5 OU)

Control Interface gesture/voice; **Language** Common

Manufacturer Socrosoft (+1 entertainment/5% overheats 1d4 mins)

ADD-ONS

entertainment x2, holoprojector x2

The Socrosoft XPlay3x2 takes the XPlay3 and turns the dial up another notch. Forgetting the onboard storage compartment, this model adds another holoprojector for truly immersive two creature simultaneous entertainment. Socrosoft cannot stress enough to play carefully when the holoprojector is turned on and the purchaser agrees to assume all liability in case of injury.

SPACEBOT**TIER 3****Price** 608

Small two-armed du-II synthmuscle voice-operated service bot

Speed 15 ft. (synthmuscle propulsion)**HP** 15; **Hardness** 5**SYSTEMS****Computer** tier 1; **Power Source** PS Mk I-A (4 OU)**Control Interface** voice; **Language** Common**Manufacturer** QBCP (10% cheaper, 5% operator not recognized 1d4 mins)**ADD-ONS**

atmospheric container, magnetic clamps, storage compartment x2

SpaceBot, for all of your out in the vacuum needs, is an award winning idea made more affordable! You won't break the bank making sure you and your crew are safer in the event of an emergency out in the deep black void! This model lets you breathe easier in space, literally! Don't worry about scratching your ship, the magnetic clamps on this model are lined with an extremely soft material to prevent just that from happening! You can't afford NOT to get this service bot!

SURVEYBOT**TIER 3****Price** 1,733

Medium four-armed quad-II wheeled voice-operated service bot

Speed 30 ft. (wheel propulsion)**HP** 15; **Hardness** 5**SYSTEMS****Computer** tier 1; **Power Source** PS Mk I-A (4 OU)**Control Interface** voice; **Language** Common**Manufacturer** QBCP (10% cheaper, 5% operator not recognized 1d4 mins)**ADD-ONS**

liquids purifier, mass spectrometer, storage compartment x2

This service bot is exactly what your research organization needs! SurveyBot has liquids purification! Xe has a mass spectrometer! Xe even has TWO storage compartments for bringing samples back to the lab! Don't miss out on this great opportunity and at this price you can be sure that this model won't last long! If you act now you'll even get a complimentary certificate of authenticity!

TM-SBQMED "MED DOG"**TIER 3****Price** 1,450

Small four-armed quad-II synthmuscle voice-operated service bot

Speed 20 ft. (synthmuscle propulsion)**HP** 20; **Hardness** 5**SYSTEMS****Computer** tier 1; **Power Source** PS Mk I-B (5 OU)**Control Interface** voice; **Language** Common**Manufacturer** TuffMade (+5 HP, -5 ft.)**ADD-ONS**

defibrillator, magnetic clamps, medibay, storage compartment

The "Med Dog," officially known as the TM-SBQMed, is designed for medical use on small outposts or remote research stations. Xe is a quadruped that can function on its hind legs, leaving two appendages for grasping or applying contents of its medibay, or on all fours to allow for easy access by xyrs operator or designated creatures.

TM-SBSW "SPACE WALKER" TIER 3

Price 675

Small two-armed du-II synthmuscle voice-operated service bot

Speed 15 ft. (synthmuscle propulsion)

HP 20; **Hardness** 5

SYSTEMS

Computer Tier 1; **Power Source** PS Mk I-A (4 OU)

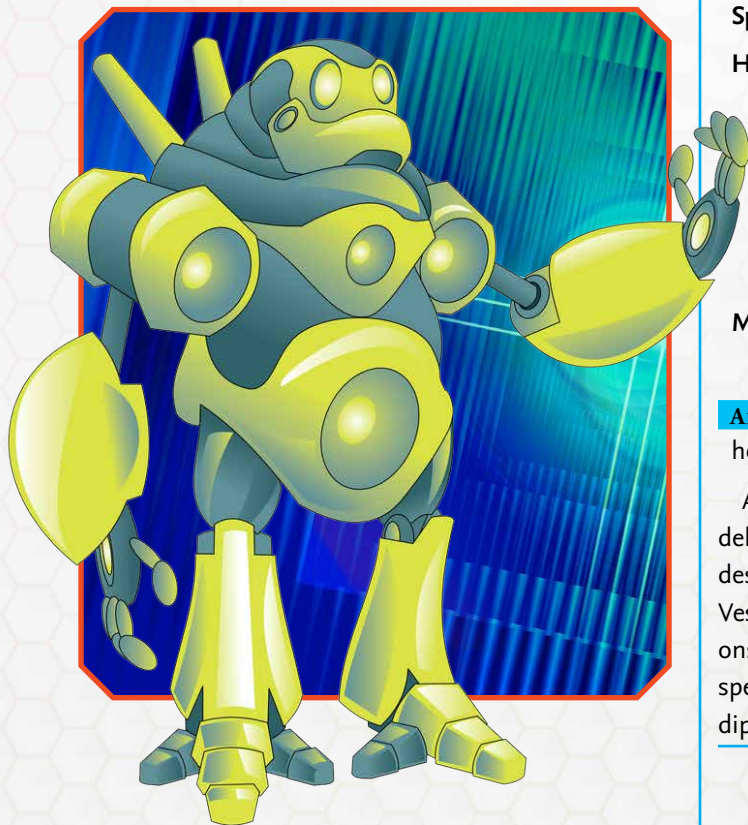
Control Interface voice; **Language** Common

Manufacturer TuffMade (+5 HP, -5 ft.)

ADD-ONS

atmospheric container, magnetic clamps, storage compartment x2

The TM-SBSW, or "Space Walker," is the first bipedal service bot from TuffMade Solutions. Broad market appeal was attained with expanded storage options, magnetic clamps, and an atmospheric container in case of emergency. This was the first model to receive the coveted "Adamantine Seal of Approval" award for the manufacturer.



TIER 4

Tier 4 SBs

Name	Price
FC4 Echedemos	4,525
FC4 Panacea	3,100
Frigid-HT	3,025
Heater-HT	3,025
HotBot	2,678
Socrosoft XPlay4	4,025
Socrosoft XPlay4x2	5,500
SpeechBot	4,073
TM-S3B	725
TM-SBE	2,900

FC4 ECHEDEMOS TIER 4

Price 4,525

Medium six-armed hex-III synthmuscle gesture/tactile/voice-operated service bot

Speed 40 ft. (synthmuscle propulsion)

HP 20; **Hardness** 6

SYSTEMS

Computer tier 2; **Power Source** PS Mk IV-C (9 OU)

Control Interface gesture/tactile/voice;
Language Common, two others chosen

Manufacturer Friendly Face (+1/2 Diplomacy/tier, 5% DC o holoskin)

ADD-ONS

holoskin x2, translator x2

An FC3 Echedemos is an invaluable asset to delegates and foreign embassy officials. Originally designed to facilitate peaceful treaties in Shirren and Vesk languages using xyrs separate holoskin add-ons to simultaneously appear as the two different species, this model has been a rousing success in the diplomatic community.

FC4 PANACEA **TIER 4****Price** 3,100

Medium four-armed quad-III synthmuscle gesture/tactile/voice-operated service bot

Speed 30 ft. (synthmuscle propulsion)**HP** 20; **Hardness** 6**SYSTEMS****Computer** tier 2; **Power Source** PS Mk II-A (5 OU)**Control Interface** gesture/tactile/voice; **Language** Common**Manufacturer** Friendly Face (+1/2 Diplomacy/tier, 5% DC o holoskin)**ADD-ONS**

atmospheric container, defibrillator, medibay, non-conductive coating, realistic skin

The FC4 Panacea, while not a cure all, is an extremely versatile medical SB made with a species specific realistic skin add-on meant to provide a calming effect on patients. Xyr upgraded computer can handle multiple emergency scenarios given by xyrs operator.

FRIGID-HT **TIER 4****Price** 3,025

Medium four-armed quad-III synthmuscle voice-operated service bot

Speed 25 ft. (synthmuscle propulsion)**HP** 20; **Hardness** 6**SYSTEMS****Computer** tier 2; **Power Source** PS Mk II-B (6 OU)**Control Interface** voice; **Language** Common**Manufacturer** HiTech (+1 add-on, 5% add-on fail 1d4 mins)**ADD-ONS**

atmospheric container, insulation layer x2, magnetic clamps, storage compartment

The Frigid-HT is designed for cold environment search and rescue. Double layered insulation add-ons

allow this model to withstand colder temperatures for longer than average while the magnetic clamps allow xem to operate in a wide variety of cold environments. Atmospheric container is specially sealed to prevent freezing of liquid atmosphere or condensation and subsequent freezing of gaseous atmosphere.

HEATER-HT **TIER 4****Price** 3,025

Medium four-armed quad-III synthmuscle voice-operated service bot

Speed 25 ft. (synthmuscle propulsion)**HP** 20; **Hardness** 6**SYSTEMS****Computer** tier 2; **Power Source** PS Mk II-B (6 OU)**Control Interface** voice; **Language** Common**Manufacturer** HiTech (+1 add-on, 5% add-on fail 1d4 mins)**ADD-ONS**

atmospheric container, cooling layer x2, magnetic clamps, storage compartment

The Heater-HT is designed for hot environment search and rescue and is the twin to the Frigid-HT. Double layered cooling add-ons allow this model to withstand hotter temperatures for longer than average while the magnetic clamps allow xem to operate in a wide variety of hot environments. Atmospheric container is specially sealed to prevent evaporation and subsequent ionization of liquid atmosphere or ionization of gaseous atmosphere into plasma.

HOTBOT **TIER 4****Price** 2,678

Medium four-armed quad-III synthmuscle voice-operated service bot

Speed 25 ft. (synthmuscle propulsion)**HP** 20; **Hardness** 6

SYSTEMS

Computer tier 2; **Power Source** PS Mk II-B (6 OU)

Control Interface voice; **Language** Common

ADD-ONS

atmospheric container, cooling layer x2,
magnetic clamps

Does your life run hot? Do you need a service bot that can function in your balmy habitation? Then look no further than the HotBot from QBCP. This SB can function hotter for longer with its double layered cooling layers. If the outside of your ship is blistering to the touch then have no fear! The HotBot comes standard with magnetic clamps too! Don't hesitate, order now!

SOCROSOFT XPLAY4

TIER 4

Price 4,025

Medium four-armed quad-III wheeled gesture/
voice-operated service bot

Speed 30 ft. (wheel propulsion)

HP 20; **Hardness** 6

SYSTEMS

Computer tier 1; **Power Source** PS Mk II-B (6 OU)

Control Interface gesture/voice; **Language**
Common

Manufacturer Socrosoft (+1 entertainment/5%
overheats 1d4 mins)

ADD-ONS

entertainment x3, foam dampener, holoprojector,
storage compartment

The Socrosoft XPlay4 adds a third entertainment add-on for three player fun. The additional foam dampener helps to keep sound from rattling the SB and distracting from the immersion offered by the holoprojector. The storage compartment standard on this model has three separators to allow each operator to store their own physical media or controllers.

SOCROSOFT XPLAY4x2

TIER 4

Price 5,500

Medium four-armed quad-III wheeled gesture/
voice-operated service bot

Speed 30 ft. (wheel propulsion)

HP 20; **Hardness** 6

SYSTEMS

Computer tier 1; **Power Source** PS Mk II-C (7 OU)

Control Interface gesture/voice; **Language**
Common;

Manufacturer Socrosoft (+1 entertainment/5%
overheats 1d4 mins)

ADD-ONS

entertainment x3, foam dampener, holoprojector x2

The Socrosoft XPlay4x2 introduces a second holoprojector for truly immersive play for two separate, simultaneous operators. This addition is the first of its kind for an entertainment focused SB. Socrosoft's specialized OS is programmed to give priority to the game playing functionality of the two holoprojectors and as such offers the smoothest and most realistic experience on the market.

SPEECHBOT

TIER 4

Price 4,073

Medium six-armed hex-III synthmuscle gesture/
tactile/voice-operated service bot

Speed 40 ft. (synthmuscle propulsion)

HP 20; **Hardness** 6

SYSTEMS

Computer tier 2; **Power Source** PS Mk IV-C (9 OU)

Control Interface gesture/tactile/voice; **Language**
Common, two others chosen

Manufacturer QBCP (10% cheaper, 5% operator
not recognized 1d4 mins)

ADD-ONS

holoskin x2, translator x2

Do you get flustered at the thought of speaking?

Do you always wish you could talk to creatures in more than just your own language? Do you want to appear more intelligent to everyone else? The SpeechBot is your chance at answering those questions! With two translator add-ons AND two holoskins, this bot is your best bet in the language arena. Don't forget, the next one hundred customers get a free customer service call!

TM-S3B "BIG BOX"

TIER 4

Price 725

Medium four-armed quad-III wheeled voice-operated service bot

Speed 20 ft. (wheel propulsion)

HP 25; **Hardness** 6

SYSTEMS

Computer tier 1; **Power Source** PS Mk II (4 OU)

Control Interface Voice; **Language** Common

Manufacturer TuffMade (+5 HP, -5 ft.)

ADD-ONS

magnetic clamps, storage compartment x5

TM-S3B's, colloquially known as "Big Box," have a singular purpose for storing items. This model is designed as a mine trolley for hauling equipment and raw materials on asteroids and other risky mining locations. This model was runner-up for the coveted "Adamantine Seal of Approval" several years ago but has not since been considered.

TM-SBE "EVACUATOR"

TIER 4

Price 2,900

Medium eight-armed oct-IV atmospheric jets voice-operated service bot

Speed 40 ft. (atmospheric jets propulsion)

HP 25; **Hardness** 6

SYSTEMS

Computer tier 1; **Power Source** PS Mk II-B (6 OU)

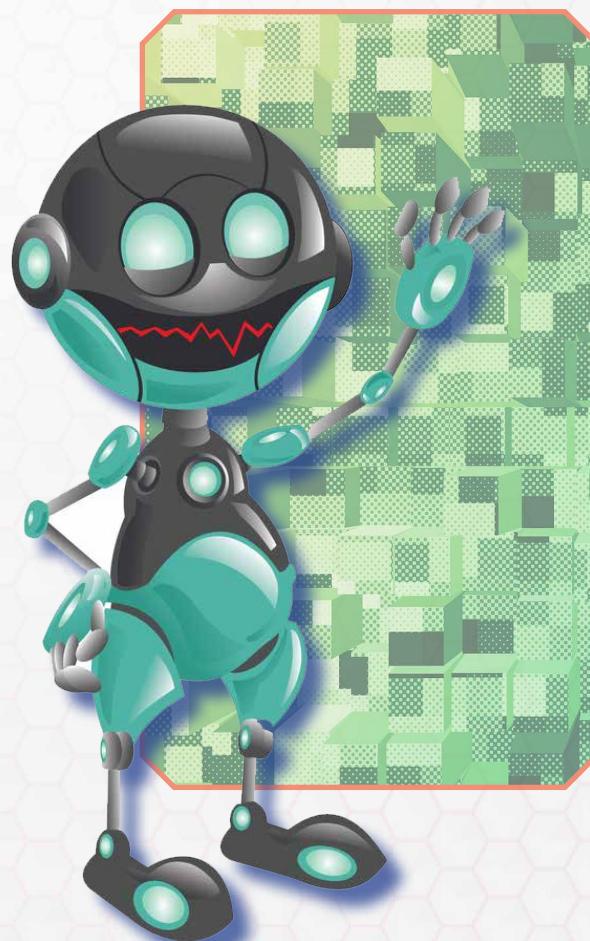
Control Interface Voice; **Language** Common

Manufacturer TuffMade (+5 HP, -5 ft.)

ADD-ONS

atmospheric container, liftjack, magnetic clamps, omnitool, storage compartment, translator

TM-SBE, or the "Evacuator," is almost a standard SB for mining operations with xys various emergency add-ons and atmospheric jets which allow it to fly in any atmosphere with an octopus-like motion. The eight appendages equipped allow for multiple operators to remotely accomplish tasks during emergency evacuation scenarios.



TIER 5

Tier 5 SBs

Name	Price
Acidus-HT	3,125
FC5 Aristotle	7,025
FC5 Democritus	4,650
PictoBot	5,873
Socrosoft XPlay5	5,200
Socrosoft XPlay5 Ex	5,250
ThinkerBot	6,323
TM-SBP	6,525
TM-SBT	1,275
Voltus-HT	3,125

ACIDUS-HT

TIER 5

Price 3,125

Medium four-armed quad-III synthmuscle voice-operated service bot

Speed 25 ft. (synthmuscle propulsion)

HP 25; **Hardness** 5

SYSTEMS

Computer tier 2; **Power Source** PS Mk II-B (6 OU)

Control Interface voice; **Language** Common

Manufacturer HiTech (+1 add-on, 5% add-on fail 1d4 mins)

ADD-ONS

atmospheric container, basic layer x2, magnetic clamps, storage compartment x3

The Acidus-HT is a slightly upgraded search and rescue service bot. Its double-layered basic add-on allows for longer mission times in acidic environments. The storage compartments are typically filled with basic agents to help neutralize environmental acidity for a brief period while rescue targets are transported to safety. The atmospheric container is double hermetically sealed to prevent reactions with the atmosphere contained.

FC5 ARISTOTLE

TIER 5

Price 7,025

Medium two-armed du-II synthmuscle gesture/tactile/voice-operated service bot

Speed 20 ft. (synthmuscle propulsion)

HP 25; **Hardness** 7

SYSTEMS

Computer tier 4; **Power Source** PS Mk II-A (5 OU)

Control Interface gesture/tactile/voice; **Language** Common, one chosen

Manufacturer Friendly Face (+1/2 Diplomacy/tier, 5% DC o holoskin)

ADD-ONS

holoskin, translator

The FC5 Aristotle is designed as a thinking machine for companionship to intellectual creatures. While not truly intelligent, this model has an upgraded computer that houses many analyses of famous astronomers, mathematicians, and philosophers. A specialized sub production run of the FC5 Aristotle has the recorded moves and outcomes of most of the popular games played across the galactic sectors.

FC5 DEMOCRITUS

TIER 5

Price 4,650

Medium eight-armed oct-IV atmospheric jets gesture/tactile/voice-operated service bot

Speed 45 ft. (atmospheric jets propulsion)

HP 25; **Hardness** 7

SYSTEMS

Computer tier 2; **Power Source** PS Mk IV-C (9 OU)

Control Interface gesture/tactile/voice; **Language** Common

Manufacturer Friendly Face (+1/2 Diplomacy/tier, 5% DC o holoskin)

ADD-ONS

holoskin, liquids purifier, magnetic clamps, mass spectrometer, omnitool, omnidirectional thrusters

The FC5 Democritus is an analytical and research aide model manufactured with low or zero gravity environments as the market. Several scientific bodies have given their overt support of this model but it has failed to yet attain the "Adamantine Seal of Approval" for Friendly Face Service Bots.

PICBOT

TIER 5

Price 5,873

Small three-armed tri-IV anti-grav gesture/voice-operated service bot

Speed 25 ft. (anti-grav propulsion)

HP 25; **Hardness** 7

SYSTEMS

Computer tier 3; **Power Source** PS Mk II-B x2 (12 OU)

Control Interface gesture/voice; **Language** Common

Manufacturer QBCP (10% cheaper, 5% operator not recognized 1d4 mins)

ADD-ONS

holoprojector, holorecorder, omnidirectional thrusters, storage compartment x2

If a picture is worth a thousand words then a novel should be written about the PictoBot! This little service bot has a high quality holorecorder AND holoprojector that can be activated with a wave of your appendage or the sound of your voice! You can capture all of your bravest, wildest moments out in the deep black of space and then show it to all of your friends for proof! Order now while you still can!

SOCROSOFT XPLAY5

TIER 5

Price 5,200

Medium four-armed quad-III wheeled gesture/voice-operated service bot

Speed 30 ft. (wheel propulsion)

HP 25; **Hardness** 7

SYSTEMS

Computer tier 2; **Power Source** PS Mk II-C (7 OU)

Control Interface gesture/voice; **Language** Common

Manufacturer Socrosoft (+1 entertainment/5% overheats 1d4 mins)

ADD-ONS

entertainment x4, holoprojector x2

The Socrosoft XPlay5 has been upgraded to four entertainment add-ons paired with two holoprojectors. The improved computer allows for each of the operators to experience immersive holoprojection with interlaced projection and sixty frames per second frequency. The unprecedented level of immersion this allows has generated some new and interesting game concepts from developers with four local players in mind.

SOCROSOFT XPLAY5 EX

TIER 5

Price 5,250

Medium four-armed quad-III wheeled gesture/voice-operated service bot

Speed 30 ft. (wheel propulsion)

HP 25; **Hardness** 7

SYSTEMS

Computer tier 2; **Power Source** PS Mk II-C (7 OU)

Control Interface gesture/voice; **Language** Common

Manufacturer Socrosoft (+1 entertainment/5% overheats 1d4 mins)

ADD-ONS

entertainment x4, holoprojector x2, storage compartment

The Socrosoft XPlays Ex gives you all the entertainment value of the XPlays but with an added, dedicated storage add-on. This storage compartment is made from premium materials and boasts moldable foam to allow secure storage of all physical media and controllers. Integrated wiring and ports makes for easy reactive lighting and/or cooling options.

THINKERBOT

TIER 5

Price 6,323

Medium two-armed du-II synthmuscle gesture/tactile/voice-operated service bot

Speed 20 ft. (synthmuscle propulsion)

HP 25; **Hardness** 7

SYSTEMS

Computer tier 4; **Power Source** PS Mk II-A (5 OU)

Control Interface gesture/tactile/voice; **Language** Common, one chosen

Manufacturer QBCP (10% cheaper, 5% operator not recognized 1d4 mins)

ADD-ONS

holoskin, translator

Are you a deep thinker? Do you often wish you had a friend who could follow along on your circuitous thought patterns? Look no further than ThinkerBot! This SB can be programmed with any ancient language and can be given the appearance of any long gone thinker! If you hurry and order now then the ThinkerBot will be preloaded with your choice of any one ancient thinking entity!

TM-SBP "PICTLY"

TIER 5

Price 6,525

Small three-armed tri-IV anti-grav gesture/voice-operated service bot

Speed 20 ft. (anti-grav propulsion)

HP 30; **Hardness** 7

SYSTEMS

Computer tier 3; **Power Source** PS Mk II-B x2 (12 OU)

Control Interface gesture/voice; **Language** Common

Manufacturer TuffMade (+5 HP, -5 ft.)

ADD-ONS

holoprojector, holorecorder, omnidirectional thrusters, storage compartment x2

Officially, the TM-SBP or "Pictly," was marketed towards law enforcement agencies to use as a flying recording device to catch criminals in the act. Rumors suggest this model was developed as a spy drone for a corrupt executive's gangster associates. Those rumors aside, Pictly has been a success in its target markets as well as in private investigation firms.

TM-SBT "TOOLBOX"

TIER 5

Price 1,275

Small four-armed quad-III anti-grav voice-operated service bot

Speed 25 ft. (anti-grav propulsion)

HP 30; **Hardness** 7

SYSTEMS

Computer tier 2; **Power Source** PS Mk II (4 OU)

Control Interface voice; **Language** Common

Manufacturer TuffMade (+5 HP, -5 ft.)

ADD-ONS

liftjack, omnitool, storage compartment x4

The "Toolbox," or TM-SBT, is a floating fix-it bot complete with liftjack capable of hoisting 2,500 pounds five feet and an omnitool for all your fixing

needs. The upgraded computer inside this SB gives xem the ability to understand almost any relatively simple list of directions given xem. Operators must spend time updating schematics for various things if they wish to keep Toolbox current as it does not automatically download those things itself.

VOLTUS-HT

TIER 5

Price 3,125

Medium four-armed quad-III synthmuscle voice-operated service bot

Speed 25 ft. (synthmuscle propulsion)

HP 25; **Hardness** 5

SYSTEMS

Computer tier 2; Power Source PS Mk II-B (6 OU)

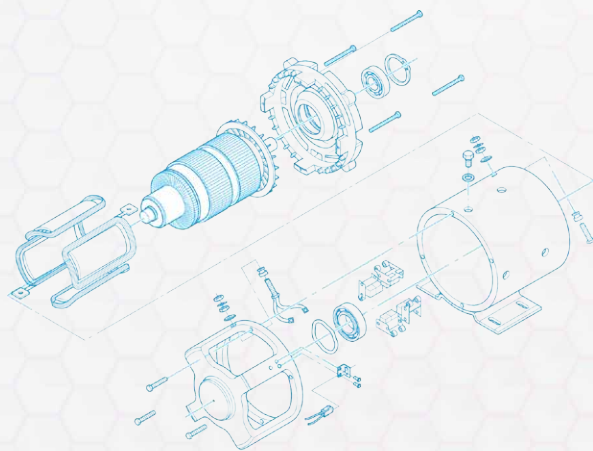
Control Interface voice; Language Common

Manufacturer HiTech (+1 add-on, 5% add-on fail 1d4 mins)

ADD-ONS

atmospheric container, non-conductive coating x2, magnetic clamps, storage compartment x3

The Voltus-HT is a slightly upgraded search and rescue service bot. Its double layered non-conductive coating add-on allows for longer mission times in charged environments. The storage compartments are typically lined with rubber to contained materials from being shorted out. The atmospheric container is entirely made from rubber materials to prevent failure of the add-on due to electrical charge.



⚡ TIER 6

Tier 6 SBs

Name	Price
FC6 Circe	26,100
FC6 Metis	7,050
Scanner-HT	19,300
Socrosoft XPlay6	6,950
Socrosoft XPlay6x4	8,550
Sonicus-HT	3,350
SounderBot	2,970
TM-SBPB	2,100
TM-SBR	4,100
ToiletBot	1,890

FC6 CIRCE TIER 6

Price 26,100

Medium four-armed quad-IV synthmuscle gesture/tactile/voice-operated service bot

Speed 30 ft. (synthmuscle propulsion)

HP 30; **Hardness** 8

SYSTEMS

Computer tier 4; **Power Source** PS Mk IV-C (9 OU)

Control Interface gesture/tactile/voice; **Language** Common

Manufacturer Friendly Face (+1/2 Diplomacy/tier, 5% DC o holoskin)

ADD-ONS

holoskin, mini-teleport, quantum comms, storage compartment

The FC6 Circe is designed as an automated magician's assistant but has found use in the scavenger and smuggler populations for xyr's add-ons allowing it to teleport an item and communicate to a singular location. Xyr's holoskin add-on is typically programmed with several outfits and skins to accomplish illusory acts.

FC6 METIS**TIER 6****Price** 7,050

Medium six-armed hex-IV synthmuscle gesture/tactile/voice-operated service bot

Speed 40 ft. (synthmuscle propulsion)**HP** 30; **Hardness** 8**SYSTEMS****Computer** tier 4; **Power Source** PS Mk V-C (10 OU)**Control Interface** gesture/tactile/voice; **Language** Common**Manufacturer** Friendly Face (+1/2 Diplomacy/tier, 5% DC o holoskin)**ADD-ONS**

holoskin x3, realistic skin

A model specialized for having multiple different species programmed into the upgraded computer, the FC6 Metis panders to a market who find comfort and calm in other species. While not being able to change holoskin renders without impetus from xyrs operator there are some customers complaining of seemingly random holoskin shifts at inopportune moments.

SCANNER-HT**TIER 6****Price** 19,300

Medium seven-armed sept-III wheeled voice-operated service bot

Speed 45 ft. (wheel propulsion)**HP** 30; **Hardness** 8**SYSTEMS****Computer** tier 3; **Power Source** PS Mk III-C (8 OU)**Control Interface** voice; **Language** Common**Manufacturer** HiTech (+1 add-on, 5% add-on fail 1d4 mins)**ADD-ONS**

atmospheric container, liquids purifier, mass spectrometer, quantum comms, scanning array, storage compartment x2

The Scanner-HT is primarily a research and analysis communication service bot intended for long distance scientific journeys. The quantum comms are paired with a transceiver on the homeworld of the funding entity. Analysis is typically not done in the field with this unit, instead the findings are directly communicated back to an entity such as a research institute or corporation headquarters.

SOCROSOFT XPLAY6**TIER 6****Price** 6,950

Medium four-armed quad-IV synthmuscle gesture/voice-operated service bot

Speed 30 ft. (synthmuscle propulsion)**HP** 30; **Hardness** 8**SYSTEMS****Computer** tier 2; **Power Source** PS Mk III-C (8 OU)**Control Interface** gesture/voice; **Language** Common**Manufacturer** Socrosoft (+1 entertainment/5% overheats 1d4 mins)**ADD-ONS**

entertainment x4, holoprojector x3, storage compartment

The Socrosoft XPlay6 is a natural evolution of the XPlays. Adding a third holoprojector includes yet another operator in the fully immersive play experience while keeping four separate entertainment add-ons provides four operator fun. This model is the first Socrosoft to feature the synthmuscle propulsion system to allow xem to move naturally with you!

SOCROSOFT XPLAY6x4**TIER 6****Price** 8,550

Medium four-armed quad-IV synthmuscle gesture/voice-operated service bot

Speed 30 ft. (synthmuscle propulsion)**HP** 30; **Hardness** 8

SYSTEMS**Computer** tier 2; **Power Source** PS Mk III x2 (10 OU)**Control Interface** gesture/voice; **Language** Common**Manufacturer** Socrosoft (+1 entertainment/5% overheats 1d4 mins)**ADD-ONS**

entertainment x4, holoprojector x4

The Socrosoft XPlay6x4 is the powered up version of the XPlay6. Adding a fourth holoprojector includes all four operators in the fully immersive play experience. This model also features the synthmuscle propulsion system to allow xem to move naturally with you. This model is so powerfully entertaining an extra add-on slot had to be put on to the frame and a second power source added just to keep all four operators fully entertained.

SONICUS-HT**TIER 6****Price** 3,350

Medium four-armed quad-IV synthmuscle voice-operated service bot

Speed 250 ft. (synthmuscle propulsion)**HP** 30; **Hardness** 8**SYSTEMS****Computer** tier 2; **Power Source** PS Mk III-A (6 OU)**Control Interface** voice; **Language** Common**Manufacturer** HiTech (+1 add-on, 5% add-on fail 1d4 mins)**ADD-ONS**

atmospheric container, foam dampener x2, magnetic clamps, storage compartment x5

The Sonicus-HT is the last mode in the line of search and rescue service bots. Its double layered foam dampener add-ons allow for longer mission times in high decibel environments. The storage compartments have slightly less volume than normal due to the sound dampening foam. The atmospheric

container is encased in a gel housing to prevent any type of structural resonance flaw from occurring.

SOUNDERBOT**TIER 6****Price** 2,970

Medium four-armed quad-IV synthmuscle voice-operated service bot

Speed 250 ft. (synthmuscle propulsion)**HP** 30; **Hardness** 8**SYSTEMS****Computer** tier 2; **Power Source** PS Mk III-A (6 OU)**Control Interface** voice; **Language** Common**Manufacturer** QBCP (10% cheaper, 5% operator not recognized 1d4 mins)**ADD-ONS**

atmospheric container, foam dampener x2, magnetic clamps, storage compartment x4

Do you live or frequent really noisy places? Are normal SBs not sturdy enough to take the sound your band dishes out? Then SounderBot is just for you. Doubly layered with a foam dampener, this service bot can handle all the sound thrown at xyr without failing. If you act now, your unit will come equipped with a special color flair on all of its joints!

TM-SBPB "PORTABOTTY"**TIER 6****Price** 2,100

Medium four-armed quad-IV wheeled gesture/voice-operated service bot

Speed 25 ft. (wheel propulsion)**HP** 35; **Hardness** 8**SYSTEMS****Computer** tier 2; **Power Source** PS Mk III (5 OU)**Control Interface** gesture/voice; **Language** Common**Manufacturer** TuffMade (+5 HP, -5 ft.)

ADD-ONS

bathing apparatus, entertainment (music), storage compartment x2, waste collection

The PortaBotty, officially known as TM-SBPB, is a floating bathing and waste excretion SB was first made popular amongst far-flung research stations, military organizations, and construction companies. The consumer model added a musical entertainment unit to provide both a soothing waste excretion session and masking impolite sounds.

TM-SBR "RESEARCHER"

TIER 6

Price 4,100

Small four-armed quad-IV wheeled gesture/voice-operated service bot

Speed 25 ft. (wheel propulsion)

HP 35; **Hardness** 8

SYSTEMS

Computer tier 3; **Power Source** PS Mk III (5 OU)

Control Interface gesture/voice; **Language** Common

Manufacturer TuffMade (+5 HP, -5 ft.)

ADD-ONS

atmospheric container, mass spectrometer, non-conductive coating, storage compartment x2

"Researcher" bots, or the TM-SBR, are the go-to remote specimen collection and analysis units for the amateur scientist. Equipped with atmospheric container for emergency situations and onboard mass spectrometer plus a coating of non-conductive alloy allow xem to successfully analyze and collect specimens from charged atmospheres.

TOILETBOT

TIER 6

Price 1,890

Medium four-armed quad-IV wheeled gesture/voice-operated service bot

Speed 25 ft. (wheel propulsion)

HP 35; **Hardness** 8

SYSTEMS

Computer tier 2; **Power Source** PS Mk III (5 OU)

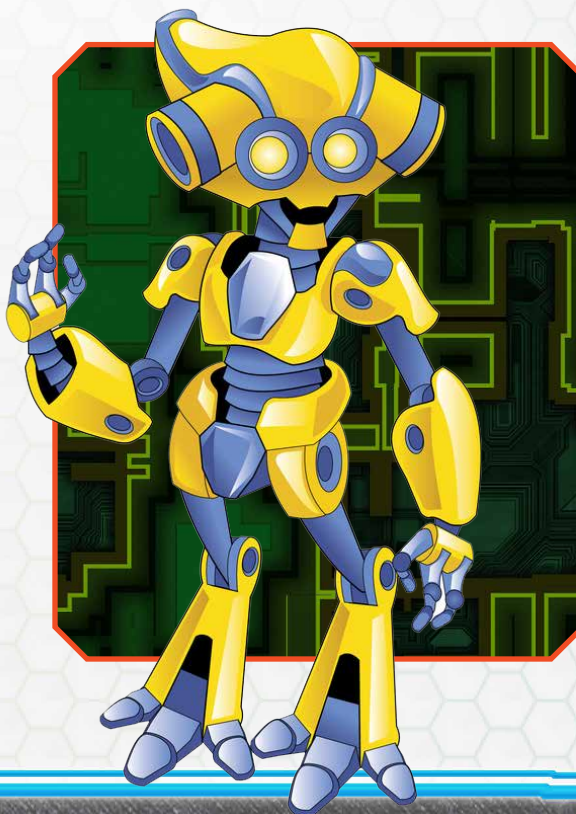
Control Interface gesture/voice; **Language** Common

Manufacturer QBCP (10% cheaper, 5% operator not recognized 1d4 mins)

ADD-ONS

bathing apparatus, entertainment (music), storage compartment x2, waste collection

Do you find yourself constantly needing to "go" when you're on the go? Are you tired of needing to share your toilet with other creatures? Then the ToiletBot is exactly for you! With preloaded music AND a bathing apparatus, the ToiletBot serves all your bathing and excretion needs. Storage compartments are rubber sealed to prevent unwanted smells from leaking out. Order now!



TIER 7

Tier 7 SBs

Name	Price
Charger-HT	9,100
ChargerBot	8,145
FC7 Cleopat	15,400
FC7 Kanathos	8,250
Recorder-HT	21,300
Socrosoft XPlay7	9,750
Socrosoft XPlay7AO	9,900
TalkerBot	24,345
TM-SBC	27,050
TM-SBF	4,550

CHARGER-HT

TIER 7

Price 9,100

Medium eight-armed oct-IV (extra add-on)
atmospheric jets voice-operated service bot

Speed 50 ft. (atmospheric jets propulsion)

HP 35; **Hardness** 9

SYSTEMS

Computer tier 4; **Power Source** PS Mk III-A x2
(12 OU)

Control Interface voice; **Language** Common

Manufacturer HiTech (+1 add-on, 5% add-on fail
1d4 mins)

ADD-ONS

charger x5, storage compartment x2

Charger-HT is designed as a mobile battery. Xyr upgraded computer provides smart charging and its five charger ports allow for a normal team of researchers or amateurs to keep their equipment functional in the field. This model ended up sacrificing a cooling layer to prevent overheating when all five charger ports were being used as initial feedback indicated a storage compartment was more useful.

CHARGERBOT

TIER 7

Price 8,145

Medium eight-armed oct-IV (extra add-on)
atmospheric jets voice-operated service bot

Speed 50 ft. (atmospheric jets propulsion)

HP 35; **Hardness** 9

SYSTEMS

Computer tier 4; **Power Source** PS Mk III-A x2
(12 OU)

Control Interface voice; **Language** Common

Manufacturer QBCP (10% cheaper, 5% operator
not recognized 1d4 mins)

ADD-ONS

charger x5, storage compartment

Do you have more devices that run on battery than you can count? Never leave home base without at least five of them? Then the ChargerBot has you covered! Featuring five standard charging ports and a handy storage compartment to place your smaller devices while they are charging, ChargerBot is perfect for the fast paced lifestyle you lead. If you order this SB now a replacement charger cord will be included!

FC7 CLEOPAT

TIER 7

Price 15,400

Medium four-armed quad-IV wheeled gesture/
tactile/voice-operated service bot

Speed 30 ft. (wheel propulsion)

HP 35; **Hardness** 9

SYSTEMS

Computer tier 4; **Power Source** PS Mk V-C (10 OU)

Control Interface gesture/tactile/voice; **Language**
Common, six other chosen

Manufacturer Friendly Face (+1/2 Diplomacy/tier,
5% DC o holoskin)

ADD-ONS

holoskin, translator x6

The FC7-Cleopat is a polyglot protocol SB designed to aid its operator in a variety of languages. The holoskin add-on aids even further if the canny operator instructs xem to load up different projections based on the species of the creature with which xe is currently speaking. The OS programming team is still chasing the bug causing sporadic holoskin failure but so far no complaints have been lodged against this model.

FC7 KANATHOS

TIER 7

Price 8,250

Small eight-armed oct-IV (extra add-on) anti-grav gesture/tactile/voice-operated service bot

Speed 50 ft. (anti-grav propulsion)

HP 35; **Hardness** 9

SYSTEMS

Computer tier 4; **Power Source** PS Mk III-A (6 OU)

Control Interface gesture/tactile/voice; **Language** Common

Manufacturer Friendly Face (+1/2 Diplomacy/tier, 5% DC o holoskin)

ADD-ONS

bathing apparatus, cleaning bay, entertainment, liquids purifier, realistic skin, waste collection

A Friendly Face personal cleansing unit, the FC7 Kanathos is a widely popular model amongst customers who spend a significant portion of time away from the comforts of home. It automatically detects the measurements of each room and objects in its potential path for cleaning and alerts consumers when something may need moved. Equipped with bathing and privacy screens plus this consumer model adds an entertainment add-on, the FC7 Kanathos combines Friendly Face style with utility.

RECORDER-HT

TIER 7

Price 21,300

Medium eight-armed oct-IV (extra add-on x4) atmospheric jets voice-operated service bot

Speed 50 ft. (atmospheric jets propulsion)

HP 35; **Hardness** 9

SYSTEMS

Computer tier 1; **Power Source** PS Mk III-C x2 (16 OU)

Control Interface voice; **Language** Common

Manufacturer HiTech (+1 add-on, 5% add-on fail 1d4 mins)

ADD-ONS

holoprojector, holorecorder x11, storage compartment

The Recorder-HT is an advanced holorecording model with playback capabilities aimed at holoentertainment directors and scientific symposium presenters. With xyrs array of holorecording devices, the number of angles and fidelity available to a given recording is fairly staggering. The computer is an older model but suffices with a limited personality given to its artificial intelligence. Some customers complain about having to choose between longer time for recording or increased fidelity and holo angles but customer satisfaction numbers are within an acceptable level.

SOCROSOFT XPLAY7

TIER 7

Price 9,750

Medium eight-armed oct-IV (extra add-on) synthmuscle gesture/voice-operated service bot

Speed 50 ft. (synthmuscle propulsion)

HP 35; **Hardness** 9

SYSTEMS

Computer tier 2; **Power Source** PS Mk III x2 (10 OU)

Control Interface gesture/voice; **Language** Common

Manufacturer Socrosoft (+1 entertainment/5% overheats 1d4 mins)

ADD-ONS

entertainment x4, holoprojector x4, storage compartment x2

The Socrosoft XPlay7 maintains all the fully immersive gameplay experience you've come to expect since the XPlay6 while adding two storage compartments. These premium quality add-ons are specially lined to allow the usual extra cooling or reactive lighting but is also designed to house extra sound amplifiers without causing undue vibrations to the unit. A special retractable housing makes this possible without taking up any noticeable space!

SOCROSOFT XPLAY7AO**TIER 7**

Price 9,900

Medium eight-armed oct-IV (extra add-on) synthmuscle gesture/voice-operated service bot

Speed 50 ft. (synthmuscle propulsion)

HP 35; **Hardness** 9

SYSTEMS

Computer tier 2; **Power Source** PS Mk III x2 (10 OU)

Control Interface gesture/voice; **Language** Common

Manufacturer Socrosoft (+1 entertainment/5% overheats 1d4 mins)

ADD-ONS

alcohol dispenser, entertainment x4, holoprojector x4, storage compartment

Socrosoft's first adult-only model, the XPlay7AO dispenses alcoholic beverages while still offering all of the entertainment options for which the manufacturer is famous. It is strongly encouraged that any and all activities in which the XPlay7AO is also dispensing alcoholic beverages have a sober person available. Socrosoft is not liable for any injuries or incarceration from the consequences of alcohol consumption.

TALKERBOT**TIER 7**

Price 24,345

Small four-armed quad-II anti-grav voice-operated service bot

Speed 30 ft. (anti-grav propulsion)

HP 35; **Hardness** 9

SYSTEMS

Computer tier 5; **Power Source** PS Mk III (5 OU)

Control Interface voice; **Language** Common, one other chosen

Manufacturer QBCP (10% cheaper, 5% operator not recognized 1d4 mins)

ADD-ONS

quantum comms, storage compartment x2, translator

Are you constantly a long way from home? Do you want to talk to your loved ones or investors whenever you want? The TalkerBot solves your dilemma! Voice activated, this SB can communicate with a transceiver across the vast distances between the stars! Don't wait, this model is sure to sell out quickly and if you hurry you can get a free personalized decal set so you know which transceiver belongs to your TalkerBot!

TM-SBC "RADIO HEAD"**TIER 7**

Price 27,050

Small four-armed quad-II anti-grav voice-operated service bot

Speed 25 ft. (anti-grav propulsion)

HP 40; **Hardness** 9

SYSTEMS

Computer tier 5; **Power Source** PS Mk III (5 OU)

Control Interface voice; **Language** Common

Manufacturer TuffMade (+5 HP, -5 ft.)

ADD-ONS

quantum comms, storage compartment x2, translator

The TM-SBC, or “Radio Head,” is a custom order model for wealthy customers, typically traders, with a high performance computer paired to a quantum comm and a single transceiver allowing for near instantaneous and nearly unlimited distance communication. Due to its high price and low production run, these models are fairly rare. Each unit has a distinct stamp of authenticity pressed on its frame at the time of construction.

TM-SBF “CHOW TIME” TIER 7

Price 4,550

Medium four-armed quad-IV wheeled tactile/voice-operated service bot

Speed 20 ft. (wheel propulsion)

HP 40; **Hardness** 9

SYSTEMS

Computer tier 3; **Power Source** PS Mk III-A (6 OU)

Control Interface tactile/voice; **Language** Common, one other chosen

Manufacturer TuffMade (+5 HP, -5 ft.)

ADD-ONS

liquids purifier, magnetic clamps, storage compartment x4, sustenance condenser, translator

The TM-SBF, or “Chow Time,” is a short and wide rectangular shaped bot with a voice and touch screen interface. Chow Time comes pre-programmed with operator defined recipes. The storage compartments separately store raw ingredients at proper temperatures that last for up to 2 months. The unit must be cleaned after every ten uses or the food it produces begins to all taste similar.

⚡ TIER 8

Tier 8 SBs

Name	Price
CookerBot	12,128
DiggerBot	5,220
Elevator-HT	5,575
Excavator-HT	8,150
FC8 Lamprias	13,675
FC8 Orpheus	16,000
Socrosoft XPlay8	12,050
Socrosoft XPlay8Alt	12,050
TM-SBHV	10,300
TM-SBL	10,075

COOKERBOT TIER 8

Price 12,128

Medium seven-armed sept-IV synthmuscle gesture/tactile/voice-operated service bot

Speed 45 ft. (synthmuscle propulsion)

HP 40; **Hardness** 10

SYSTEMS

Computer tier 5; **Power Source** PS Mk IV-C (9 OU)

Control Interface gesture/tactile/voice; **Language** Common

Manufacturer QBCP (10% cheaper, 5% operator not recognized 1d4 mins)

ADD-ONS

blueprint access, charger, holoskin, liquids purifier, storage compartment, sustenance condenser

Do you love great tasting sustenance? Do you crave a recipe from your youth? Do you love to watch the action of cooking? Then the CookerBot is the answer to your prayers! This SB is able to find xyr way to the kitchens with its blueprint access add-on and the built-in sustenance condenser and liquids purifier add-ons make for all that is needed for

the best tasting sustenance this side of the galaxy! Ordering this model now will guarantee a special knife sharpening joint that can keep your knives atom splitting sharp!

DIGGERBOT

TIER 8

Price 5,220

Medium eight-armed oct-IV wheeled voice-operated service bot

Speed 50 ft. (wheel propulsion)

HP 40; **Hardness** 10

SYSTEMS

Computer tier 4; **Power Source** PS Mk IV (6 OU)

Control Interface voice; **Language** Common

Manufacturer QBCP (10% cheaper, 5% operator not recognized 1d4 mins)

ADD-ONS

shovel scoop x2, storage compartment x6

Do you often find yourself in need of a hole in the ground? Have you ever needed to divert the flow of a river? If you need to dig then DiggerBot is your best friend! Two shovel scoops and an unbelievable six storage compartments allow for easy terrain excavation and transportation! This model is a surefire way to impress your friends so hurry and order while supplies last!

ELEVATOR-HT

TIER 8

Price 5,575

Medium seven-armed sept-IV (extra add-on) anti-grav voice-operated service bot

Speed 45 ft. (anti-grav propulsion)

HP 40; **Hardness** 10

SYSTEMS

Computer tier 3; **Power Source** PS Mk IV x2(12 OU)

Control Interface voice; **Language** Common

Manufacturer HiTech (+1 add-on, 5% add-on fail 1d4 mins)

ADD-ONS

liftjack x10, storage compartment

The Elevator-HT is a special field unit designed with multiple liftjacks to allow several platforms to be suspended with researchers or amateurs. This prevents disturbing the object of research and allows the gathering of critical data before a determination on excavation or restoration is made. This unit is also designed to uphold structural integrity if a researcher or amateur finds themselves subject to a crumbling structure.

EXCAVATOR-HT

TIER 8

Price 8,150

Medium eight-armed oct-IV wheeled voice-operated service bot

Speed 50 ft. (wheel propulsion)

HP 40; **Hardness** 10

SYSTEMS

Computer tier 4; **Power Source** PS Mk IV (6 OU)

Control Interface voice; **Language** Common

Manufacturer HiTech (+1 add-on, 5% add-on fail 1d4 mins)

ADD-ONS

shovel scoop x2, storage compartment x7

Primarily designed for the excavation of ruins and delicate objects or fossils, the Excavator-HT is equipped with an upgraded computer to constantly calculate the structural integrity of the site as it is digging. Dual shovel scoops and eight appendages allow for multiple field researchers to operate a dig at a single time. Future upgrades to this model are being researched, including smoother and more realistic joints to further ensure safe excavation of archaeological finds.

FC8 LAMPRIAS**TIER 8****Price** 13,675

Medium seven-armed sept-IV synthmuscle
gesture/tactile/voice-operated service bot

Speed 45 ft. (synthmuscle propulsion)**HP** 40; **Hardness** 10**SYSTEMS****Computer** tier 5; **Power Source** PS Mk IV-C (9 OU)**Control Interface** gesture/tactile/voice; **Language**
Common**Manufacturer** Friendly Face (+1/2 Diplomacy/tier,
5% DC o holoskin)**ADD-ONS**

blueprint access, charger, holoskin, liquids
purifier, storage compartment, sustenance
condenser

The FC8 Lamprias is designed to function as a chef's aide or consumer friendly chef. Xe has thousands of recipes programmed into xyr upgraded computer as well as hundreds of alternatives based on available ingredients. Species' preferred tastes and recipes can be programmed into the model with a quick hook up to a galactic sector information network port. This model sometimes comes with an especially acerbic wit dictionary programmed into it.

FC8 ORPHEUS**TIER 8****Price** 16,000

Medium eight-armed oct-IV wheeled gesture/
tactile/voice-operated service bot

Speed 60 ft. (wheel propulsion)**HP** 40; **Hardness** 10**SYSTEMS****Computer** tier 5; **Power Source** PS Mk IV x2 (12 OU)**Control Interface** gesture/tactile/voice; **Language**
Common**Manufacturer** Friendly Face (+1/2 Diplomacy/tier,
5% DC o holoskin)**ADD-ONS**

atmospheric container, defibrillator, holoskin,
liftjack, non-conductive coating, turbo

An advanced emergency rescue model, the FC8 Orpheus is designed primarily for first responders or for small starship crews planning a long voyage. The choice for a holoskin add-on instead of realistic skin was made after initial testing resulted in a melted look to the SB when going into highly corrosive or hot environments. All tests with defective realistic skin have been sent to recycling.

SOCROSOFT XPLAY8**TIER 8****Price** 12,050

Medium eight-armed oct-IV synthmuscle
gesture/voice-operated service bot

Speed 50 ft. (synthmuscle propulsion)**HP** 40; **Hardness** 10**SYSTEMS****Computer** tier 3; **Power Source** PS Mk IV x2 (12 OU)**Control Interface** gesture/voice; **Language**
Common**Manufacturer** Socrosoft (+1 entertainment/5%
overheats 1d4 mins)**ADD-ONS**

cooling layer, insulation layer, entertainment x4,
holoprojector x4

The Socrosoft XPlay8 is the first model designed to function in both high and low temperature environments while still providing the fully immersive and high quality entertainment for which the manufacturer is famous. This model is tough as nails and can be used for extended periods without fear of overheating or freezing up!

SOCROSOFT XPLAY8ALT**TIER 8****Price** 12,050

Medium eight-armed oct-IV synthmuscle gesture/voice-operated service bot

Speed 50 ft. (synthmuscle propulsion)**HP** 40; **Hardness** 10**SYSTEMS****Computer** tier 3; **Power Source** PS Mk IV x2 (12 OU)**Control Interface** gesture/voice; **Language** Common**Manufacturer** Socrosoft (+1 entertainment/5% overheats 1d4 mins)**ADD-ONS**

basic layer, foam dampener, entertainment x4, holoprojector x4

The Socrosoft XPlay8Alt is the twin to the XPlay8 and is designed to function perfectly in acidic or high frequency environments. Key components are shielded internally as well as having a basic layer and foam dampener layer to keep out unwanted structural resonance frequencies or compounds from disturbing your fun.

TM-SBHV "VOLT"**TIER 8****Price** 10,300

Medium six-armed hex-IV synthmuscle voice-operated service bot

Speed 35 ft. (synthmuscle propulsion)**HP** 45; **Hardness** 10**SYSTEMS****Computer** tier 4; **Power Source** PS Mk IV-A (7 OU)**Control Interface** voice; **Language** Common**Manufacturer** TuffMade (+5 HP, -5 ft.)**ADD-ONS**

non-conductive coating x4, omnitool x2, storage compartment x2

The TM-SBHV, or the "Volt," is layered in non-conductive coating to allow xyr to safely operate in high

voltage areas. The two omnitools and six appendages allow for two separate operators to remotely conduct repair operations. It is highly recommended to store at least two extra non-conductive coatings in the storage compartments at all times to allow for an emergency reapplication of a coating.

TM-SBL "OCTOBOX"**TIER 8****Price** 10,075

Medium eight-armed oct-III atmospheric jets voice-operated service bot

Speed 55 ft. (atmospheric jets propulsion)**HP** 45; **Hardness** 10**SYSTEMS****Computer** tier 4; **Power Source** PS Mk IV (6 OU)**Control Interface** voice; **Language** Common**Manufacturer** TuffMade (+5 HP, -5 ft.)**ADD-ONS**

omnidirectional thrusters, storage compartment x6, turbo

The colloquially known "Octobox," officially the TM-SBL, is an aquatic retrieval model made to pander to a market in primarily aquatic environs. The storage compartments are configurable to become a trailer-like housing that can hold 2 Medium creatures or 1 Large creature or oddly shaped items. The omnidirectional thrusters and turbo add-ons grant increased speed and mobility and xyr upgraded computer allows xyr to have a deep logic tree of situations and resolutions.

TIER 9

Tier 9 SBs

Name	Price
CocktailBot	11,768
FC9 Heracles	19,350
FC9 Symposia	13,075
Medic-HT	12,800
Socrosoft XPlay9	16,150
Socrosoft XPlay9Alt	16,150
SurpriseBot	6,188
TM-SBPD	6,875
TM-SBO	15,375
Turbo-HT	41,250

COCKTAILBOT

TIER 9

Price 11,768

Medium five-armed pent-IV synthmuscle
gesture/tactile/voice-operated service bot

Speed 35 ft. (synthmuscle propulsion)

HP 45; **Hardness** 11

SYSTEMS

Computer tier 5; **Power Source** PS Mk IV (6 OU)

Control Interface gesture/tactile/voice; **Language**
Common, one other chosen

Manufacturer QBCP (10% cheaper, 5% operator
not recognized 1d4 mins)

ADD-ONS

alcohol dispenser, elastic joints, realistic skin,
storage compartment x4, translator

If you've ever had a dry socket, if you've ever had a thirst that normal liquids can't quench, then say hello to the CocktailBot. This model is an alcoholic beverage mixer extraordinaire with five appendages and joints that move silky smooth. Running out of your favorite spirits won't be a problem with the four additional storage compartments! If you act now then your model will come shipped with one of the

storage compartments prefilled with ice to keep your drinks icy cold!

FC9 HERACLES

TIER 9

Price 19,350

Medium eight-armed oct-IV (extra add-on
x3) atmospheric jets gesture/tactile/voice-
operated service bot

Speed 55 ft. (atmospheric jets propulsion)

HP 45; **Hardness** 11

SYSTEMS

Computer tier 5; **Power Source** PS Mk IV-A x2
(14 OU)

Control Interface gesture/tactile/voice; **Language**
Common

Manufacturer Friendly Face (+1/2 Diplomacy/tier,
5% DC o holoskin)

ADD-ONS

elastic joints, holoprojector, holoskin, liftjack,
magnetic clamps, omnidirectional thrusters,
realistic skin, turbo

The FC9 Heracles is the ultimate superhero friend SB. Equipped with realistic moving elastic joints, holoskin and realistic skin, a liftjack, holoprojector, and omnidirectional thrusters plus turbo, this model can take on the form of almost any fantastically powered creature from any species' myths. The upgraded computer contains the mythologies of almost every intelligent species in a given galactic sector.



FC9 SYMPOSIA**TIER 9****Price** 13,075Medium five-armed pent-IV synthmuscle
gesture/tactile/voice-operated service bot**Speed** 35 ft. (synthmuscle propulsion)**HP** 45; **Hardness** 11**SYSTEMS****Computer** tier 5; **Power Source** PS Mk IV (6 OU)**Control Interface** gesture/tactile/voice; **Language**
Common, one other chosen**Manufacturer** Friendly Face (+1/2 Diplomacy/tier,
5% DC o holoskin)**ADD-ONS**alcohol dispenser, elastic joints, realistic skin,
storage compartment x4, translator

The FC9 Symposia is the premier bartending SB. It comes preprogrammed with over one million drink combinations for each of the major species represented in a galactic sector. This model in particular has been given four separate, cooled or heated storage compartments for a deep reserve of alcoholic beverages in an almost limitless combination and a built-in translator with upgraded computer for witty companionship.

MEDIC-HT**TIER 9****Price** 12,800Medium eight-armed oct-IV (extra add-on x2)
anti-grav voice-operated service bot**Speed** 50 ft. (anti-grav propulsion)**HP** 45; **Hardness** 11**SYSTEMS****Computer** tier 4; **Power Source** PS Mk IV x2 (12 OU)**Control Interface** voice; **Language** Common**Manufacturer** HiTech (+1 add-on, 5% add-on fail
1d4 mins)**ADD-ONS**

medibay x11

The Medic-HT is a field service bot designed to quickly stop bleeding from wounds. Xyr secondary function is to carry an immobile target away to safety on a stretcher fashioned using some of the eight appendages equipped on this model. Initial sales indicate a successful model and early rumors hint at a possible "Adamantine Seal of Approval."

SOCROSOFT XPLAY9**TIER 9****Price** 16,150Medium eight-armed oct-IV (extra add-on x2)
synthmuscle gesture/voice-operated service bot**Speed** 50 ft. (synthmuscle propulsion)**HP** 45; **Hardness** 11**SYSTEMS****Computer** tier 3; **Power Source** PS Mk IV-A x2
(14 OU)**Control Interface** gesture/voice; **Language**
Common, two others chosen**Manufacturer** Socrosoft (+1 entertainment/5%
overheats 1d4 mins)**ADD-ONS**cooling layer, insulation layer, entertainment x4,
holoprojector x4, translator x2

The Socrosoft XPlay9 is another brilliant evolution from the XPlay8. Keeping with the hot and cold extreme durability theme, this model adds two translator add-ons to allow localisation for operators of different species to play at the same time. This model and its twin, the XPlay9Alt are both contending for the coveted "Adamantine Seal of Approval" in the current market year.

SOCROSOFT XPLAY9ALT**TIER 9****Price** 16,150

Medium eight-armed oct-IV (extra add-on x2)
synthmuscle gesture/voice-operated service bot

Speed 50 ft. (synthmuscle propulsion)**HP** 45; **Hardness** 11**SYSTEMS**

Computer tier 3; **Power Source** PS Mk IV-A x2
(14 OU)

Control Interface gesture/voice; **Language**
Common, two others chosen

Manufacturer Socrosoft (+1 entertainment/5%
overheats 1d4 mins)

ADD-ONS

basic layer, foam dampener, entertainment x4,
holoprojector x4, translator x2

The twin and fellow competitor in the coveted “Adamantine Seal of Approval” award to the XPlay9, the Socrosoft XPlay9Alt is the evolution from the XPlay8Alt. Keeping the resistance to acidic and high frequency environments, the XPlay9Alt features the same translation add-ons as its twin and allows for any species to have fun together!

SURPRISEBOT**TIER 9****Price** 6,188

Medium seven-armed sept-IV arm propellor
voice-operated service bot

Speed 40 ft. (arm propellor propulsion)**HP** 45; **Hardness** 11**SYSTEMS**

Computer tier 4; **Power Source** PS Mk IV (6 OU)

Control Interface voice; **Language** Common

Manufacturer QBCP (10% cheaper, 5% operator
not recognized 1d4 mins)

ADD-ONS

magnetic clamps, pursuit deterrent x6, storage
compartment x3

Are you often in sticky situations? Do you seem to anger the indigenous creatures wherever you go? SurpriseBot may be just what the medic ordered! Six different kinds of pursuit deterrents come standard on this model and, as the spec sheet shows, xe has three extra storage compartments to keep reloads for anything chasing you! It just isn't logical NOT to grab this model while xe is on sale!

TM-SBPD “DISTRACTOR”**TIER 9****Price** 6,875

Medium seven-armed sept-IV arm propellor
voice-operated service bot

Speed 35 ft. (arm propellor propulsion)**HP** 50; **Hardness** 11**SYSTEMS**

Computer tier 4; **Power Source** PS Mk IV (6 OU)

Control Interface voice; **Language** Common

Manufacturer TuffMade (+5 HP, -5 ft.)

ADD-ONS

magnetic clamps, pursuit deterrent x6, storage
compartment x3

The TM-SBPD, or “Distractor,” is equipped with multiple pursuit deterrent add-ons, magnetic clamps, and extra storage for refilling the deterrent compartments. Different types of deterrents such as marbles, oil, electro-dust, and holy nanoparticles are stored in the different pursuit deterrent add-ons to accommodate a wide range of pursuers. Some customers have lodged complaints that pursuit deterrent add-ons do not function properly whilst the SB is orientated upside down.

TM-SBO "OPENER"**TIER 9****Price** 15,375

Medium five-armed pent-IV wheeled voice-operated service bot

Speed 30 ft. (wheel propulsion)**HP** 50; **Hardness** 11**SYSTEMS****Computer** tier 5; **Power Source** PS Mk IV (6 OU)**Control Interface** voice; **Language** Common**Manufacturer** TuffMade (+5 HP, -5 ft.)**ADD-ONS**

blueprint access, charger, holorecorder, holoprojector, storage compartment x3

The "Opener," or TM-SBO, is TuffMade's attempt at an SB aimed at clandestine involved creatures. Unfortunately xe did not have the stealth required to be of use to professionals but the consumer model embraces that fact with a series of whistling and beeps and loud movements with its appendages. Often this model is described as cuddly or warm although there is no evidence of any stock programming that would cause this.

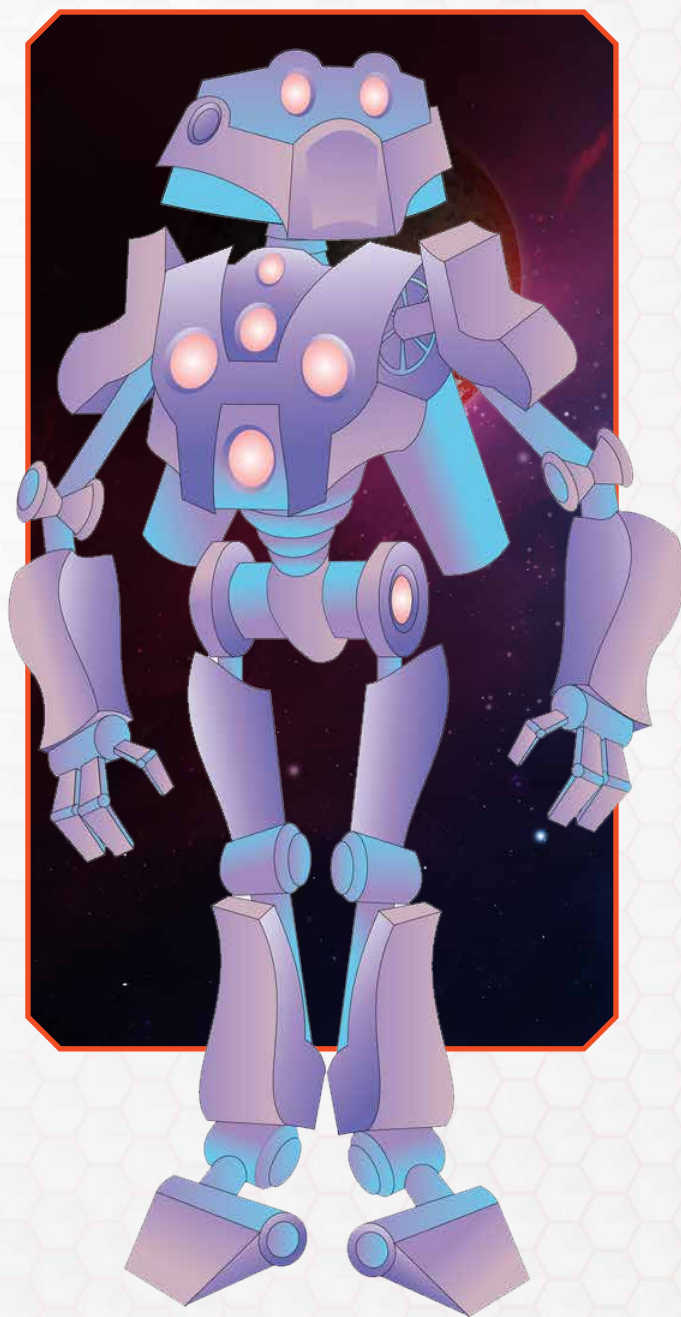
TURBO-HT**TIER 9****Price** 41,250

Medium eight-armed oct-IV (extra add-on x13) atmospheric jets voice-operated service bot

Speed 160 ft. (atmospheric jets propulsion)**HP** 45; **Hardness** 11**SYSTEMS****Computer** tier 4; **Power Source** PS Mk IV-C x3 (27 OU)**Control Interface** voice; **Language** Common**Manufacturer** HiTech (+1 add-on, 5% add-on fail 1d4 mins)**ADD-ONS**

turbo x11

The Turbo-HT is an experimental and SB designed for fast deployment. This particular model is not recommended for the field as it lacks any research equipment or communication equipment to transmit data back to the point of deployment. Future models will include at bare minimum a scanning array and potentially quantum communication. It is recommended that if this model is sold to a consumer base that a safety harness is installed.



TIER 10

Tier 10 SBs

Name	Price
FC10 Autolycus	19,650
FC10 Mithridat	25,975
Mechanic-HT	11,300
MechanoBot	9,990
Purifier-HT	15,200
PurityBot	13,230
Socrosoft XPlayX	21,700
Socrosoft XPlayXQ	36,700
TM-SBAA	14,850
TM-SBI	41,300

FC10 AUTOLYCUS

TIER 10

Price 19,650

Small eight-armed oct-IV (extra add-on x6)
atmospheric jets gesture/tactile/voice-
operated service bot

Speed 45 ft. (atmospheric jets propulsion)

HP 50; **Hardness** 12

SYSTEMS

Computer tier 5; **Power Source** PS Mk V-A x2
(16 OU)

Control Interface gesture/tactile/voice; **Language**
Common

Manufacturer Friendly Face (+1/2 Diplomacy/tier,
5% DC o holoskin)

ADD-ONS

blueprint access, charger, elastic joints, holoskin,
magnetic clamps, non-conductive coating x2,
pursuit deterrent x5

The FC10 Autolycus is an advanced model designed to aid archaeologists by dealing with various traps left in ruins or tombs. Various nefarious folk have also found this model to be supremely useful with its focus on pursuit deterrence and ability to access general blueprints from a computer terminal. It has been noted

in the model's manual that there is a flaw to xyrs OS code that allows turning off xyrs location beacon.

FC10 MITHRIDAT

TIER 10

Price 25,975

Medium seven-armed sept-IV (extra add-on
x2) wheeled gesture/tactile/voice-operated
service bot

Speed 45 ft. (wheel propulsion)

HP 50; **Hardness** 12

SYSTEMS

Computer tier 5; **Power Source** PS Mk V-C (10 OU)

Control Interface gesture/tactile/voice; **Language**
Common, nine others chosen

Manufacturer Friendly Face (+1/2 Diplomacy/tier,
5% DC o holoskin)

ADD-ONS

realistic skin, translator x9

The FC10 Mithridat is the absolutely highest quality translation and protocol SB ever designed by Friendly Face Service Bots. Nine translation add-ons, realistic skin, and powerful computer ensure that this service bot will always know exactly what to say in just about any language needed at any given moment.

MECHANIC-HT

TIER 10

Price 11,300

Medium eight-armed oct-IV (extra add-on x4)
synthmuscle voice-operated service bot

Speed 50 ft. (synthmuscle propulsion)

HP 50; **Hardness** 12

SYSTEMS

Computer tier 4; **Power Source** PS Mk V x2 (14 OU)

Control Interface voice; **Language** Common

Manufacturer HiTech (+1 add-on, 5% add-on fail
1d4 mins)

55

ADD-ONS

omnitool x13

The Mechanic-HT is designed to allow an entire team to perform repairs on something that has sustained massive damage. A large number of complaints have been lodged against this model relating to improper repairs performed, but each has been proven to be the result of operator error. Instruction manuals printed as of this model have a large warning to consumers outlining the need for operator familiarity with basic repair techniques and that this SB cannot perform repairs without proper instruction.

MECHANOBOT**TIER 10**

Price 9,990

Medium eight-armed oct-IV (extra add-on x4)
synthmuscle voice-operated service bot

Speed 50 ft. (synthmuscle propulsion)

HP 50; **Hardness** 12

SYSTEMS

Computer tier 4; **Power Source** PS Mk V x2 (14 OU)

Control Interface voice; **Language** Common

Manufacturer QBCP (10% cheaper, 5% operator not recognized 1d4 mins)

ADD-ONS

omnitool x12

Are you a relentless gearhead? Do you get frustrated when you just can't get ahold of your favorite tool? Do you have piles and piles of tools that are a pain to carry around? Then behold the MechanoBot! Fitted with eight appendages and eleven omnitools, this is a handy-creature's dream! If you order this model in the next standard hour then you'll receive a custom nameplate attached to the MechanoBot letting the galaxy know just who this SB belongs to!

PURIFIER-HT**TIER 10**

Price 15,200

Medium eight-armed oct-IV (extra add-on x4)
wheeled voice-operated service bot

Speed 50 ft. (wheel propulsion)

HP 50; **Hardness** 12

SYSTEMS

Computer tier 4; **Power Source** PS Mk V x2 (14 OU)

Control Interface voice; **Language** Common

Manufacturer HiTech (+1 add-on, 5% add-on fail 1d4 mins)

ADD-ONS

liquids purifier x13

The Purifier-HT is designed for long distance research teams going to environments with contaminated liquids for ingestion. This model also qualifies as a charity tax deduction with a minimum number of units sent to impoverished areas of galactic sectors. No future plans are currently in development for this model unless the charity tax deduction's requirements change and this model no longer qualifies.

PURITYBOT**TIER 10**

Price 13,230

Medium eight-armed oct-IV (extra add-on x4)
wheeled voice-operated service bot

Speed 50 ft. (wheel propulsion)

HP 50; **Hardness** 12

SYSTEMS

Computer tier 4; **Power Source** PS Mk V x2 (14 OU)

Control Interface voice; **Language** Common

Manufacturer QBCP (10% cheaper, 5% operator not recognized 1d4 mins)

ADD-ONS

liquids purifier x12

While the name might sound like a bore on a vacation, the PurityBot's liquids purifier function will

ensure that any party plans go off without needing to worry about drinking something contaminated! Eleven liquids purifiers add-ons adorn this crazy deal, almost enough to make sure your pool is clean enough to drink! Hurry before this deal flies away!

SOCROSOFT XPLAYX

TIER 10

Price 21,700

Medium eight-armed oct-IV (extra add-on x3)
anti-grav gesture/voice-operated service bot

Speed 50 ft. (anti-grav propulsion)

HP 50; **Hardness** 12

SYSTEMS

Computer tier 4; **Power Source** PS Mk V x2 (14 OU)

Control Interface gesture/voice; **Language**
Common, four others chosen

Manufacturer Socrosoft (+1 entertainment/5%
overheats 1d4 mins)

ADD-ONS

entertainment x4, holoprojector x4, translator x4

The Socrosoft XPlayX is the pinnacle of entertainment technology. Featuring four way translation, entertainment, and fully immersive holoprojection, the XPlayX is everything you could want in an entertainment SB. This model also introduces the anti-grav propulsion to allow for times when an operator (or four) may need to slide under to win the game!

SOCROSOFT XPLAYXQ

TIER 10

Price 36,700

Medium eight-armed oct-IV (extra add-on x3)
anti-grav gesture/voice-operated service bot

Speed 50 ft. (anti-grav propulsion)

HP 50; **Hardness** 12

SYSTEMS

Computer tier 4; **Power Source** PS Mk V x2 (14 OU)

Control Interface gesture/voice; **Language**
Common, four others chosen

Manufacturer Socrosoft (+1 entertainment/5%
overheats 1d4 mins)

ADD-ONS

entertainment x4, holoprojector x4, quantum
comms, translator x4

The Socrosoft XPlayXQ is the entertainment SB from the manufacturer to feature quantum comms. This allows for multiple XPlayXQ's to communicate and have networked game sessions anywhere in the galaxy! This model is designed for large crews separated by parsecs but who wish to see who can get the high score!

TM-SBAA "ALL AROUNDER"

TIER 10

Price 14,850

Medium eight-armed oct-IV wheeled voice-
operated service bot

Speed 40 ft. (wheel propulsion)

HP 55; **Hardness** 12

SYSTEMS

Computer tier 5; **Power Source** PS Mk V-B (9 OU)

Control Interface voice; **Language** Common

Manufacturer TuffMade (+5 HP, -5 ft.)

ADD-ONS

atmospheric container, defibrillator,
entertainment, liftjack, liquids purifier,
magnetic clamps, medibay, non-conductive
coating, storage compartment x2

The TM-SBAA, or "All Arounder," is TuffMade's SB model for consumers who have more money than sense and don't know what exactly they might need on their next venture. Featuring add-ons for a variety of situations and an upgraded computer this synthetic companion will service most needs out amongst the stars.

TM-SBI "ITEMIZER"**TIER 10****Price** 41,300

Medium eight-armed oct-IV wheeled voice-operated service bot

Speed 45 ft. (wheel propulsion)**HP** 55; **Hardness** 12**SYSTEMS****Computer** tier 6; **Power Source** PS Mk V (7 OU)**Control Interface** voice; **Language** Common**Manufacturer** TuffMade (+5 HP, -5 ft.)**ADD-ONS**

mini-teleport, quantum comms, storage compartment x6

The TM-SBI, or "Itemizer," serves as a base of operations for consumers planning extremely long distance establishments or exploration. The quantum comms are paired with a transceiver, usually a trusted general goods seller, and a corresponding transporter unit through which the operator will place an order and it is teleported directly into the Itemizer's storage compartments. Typically reserved for extremely wealthy patrons, the TM-SBI is an extremely rare production run with each unit customized to order.

OPEN GAME LICENSE Version 1.0a

The following text is the property of Wizards of the Coast, Inc. and is Copyright 2000 Wizards of the Coast, Inc ("Wizards"). All Rights Reserved.

1. Definitions: (a) "Contributors" means the copyright and/or trademark owners who have contributed Open Game Content; (b) "Derivative Material" means copyrighted material including derivative works and translations (including into other computer languages), potation, modification, correction, addition, extension, upgrade, improvement, compilation, abridgment or other form in which an existing work may be recast, transformed or adapted; (c) "Distribute" means to reproduce, license, rent, lease, sell, broadcast, publicly display, transmit or otherwise distribute; (d) "Open Game Content" means the game mechanic and includes the methods, procedures, processes and routines to the extent such content does not embody the Product Identity and is an enhancement over the prior art and any additional content clearly identified as Open Game Content by the Contributor, and means any work covered by this License, including translations and derivative works under copyright law, but specifically excludes Product Identity. (e) "Product Identity" means product and product line names, logos and identifying marks including trade dress; artifacts, creatures, characters, stories, storylines, plots, thematic elements, dialogue, incidents, language, artwork, symbols, designs, depictions, likenesses, formats, poses, concepts, themes and graphic, photographic and other visual or audio representations; names and descriptions of characters, spells, enchantments, personalities, teams, personas, likenesses and special abilities; places, locations, environments, creatures, equipment, magical or supernatural abilities or effects, logos, symbols, or graphic designs; and any other trademark or registered trademark clearly identified as Product identity by the owner of the Product Identity, and which specifically excludes the Open Game Content; (f) "Trademark" means the logos, names, mark, sign, motto, designs that are used by a Contributor to identify itself or its products or the associated products contributed to the Open Game License by the Contributor (g) "Use", "Used" or "Using" means to use, Distribute, copy, edit, format, modify, translate and otherwise create Derivative Material of Open Game Content. (h) "You" or "Your" means the licensee in terms of this agreement.

2. The License: This License applies to any Open Game Content that contains a notice indicating that the Open Game Content may only be Used under and in terms of this License. You must affix such a notice to any Open Game Content that you Use. No terms may be added to or subtracted from this License except as described by the License itself. No other terms or conditions may be applied to any Open Game Content distributed using this License.

3. Offer and Acceptance: By Using the Open Game Content You indicate Your acceptance of the terms of this License.

4. Grant and Consideration: In consideration for agreeing to use this License, the Contributors grant You a perpetual, worldwide, royalty-free, non-exclusive license with the exact terms of this License to Use, the Open Game Content.

5. Representation of Authority to Contribute: If You are contributing original material as Open Game Content, You represent that Your Contributions are Your original creation and/or You have sufficient rights to grant the rights conveyed by this License.

6. Notice of License Copyright: You must update the COPYRIGHT NOTICE portion of this License to include the exact text of the COPYRIGHT NOTICE of any Open Game Content You are copying, modifying or distributing, and You must add the title, the copyright date, and the copyright holder's name to the COPYRIGHT NOTICE of any original Open Game Content you Distribute.

7. Use of Product Identity: You agree not to Use any Product Identity, including as an indication as to compatibility, except as expressly licensed in another, independent Agreement with the owner of each element of that Product Identity. You agree not to indicate compatibility or co-adaptability with any Trademark or Registered Trademark in conjunction with a work containing Open Game Content except as expressly licensed in another, independent Agreement with the owner of such Trademark or Registered Trademark. The use of any Product Identity in Open Game Content does not constitute a challenge to the ownership of that Product Identity. The owner of any Product Identity used in Open Game Content shall retain all rights, title and interest in and to that Product Identity.

8. Identification: If you distribute Open Game Content You must clearly indicate which portions of the work that you are distributing are Open Game Content.

9. Updating the License: Wizards or its designated Agents may publish updated versions of this License. You may use any authorized version of this License to copy, modify and distribute any Open Game Content originally distributed under any version of this License.

10. Copy of this License: You MUST include a copy of this License with every copy of the Open Game Content You distribute.

11. Use of Contributor Credits: You may not market or advertise the Open Game Content using the name of any Contributor unless You have written permission from the Contributor to do so.

12. Inability to Comply: If it is impossible for You to comply with any of the terms of this License with respect to some or all of the Open Game Content due to statute, judicial order, or governmental regulation then You may not Use any Open Game Material so affected.

13. Termination: This License will terminate automatically if You fail to comply with all terms herein and fail to cure such breach within 30 days of becoming aware of the breach. All sublicenses shall survive the termination of this License.

14. Reformation: If any provision of this License is held to be unenforceable, such provision shall be reformed only to the extent necessary to make it enforceable.

15. COPYRIGHT NOTICE

Open Game License v 1.0a Copyright 2000, Wizards of the Coast, Inc.

System Reference Document. Copyright 2000, Wizards of the Coast, Inc.; Authors: Jonathan Tweet, Monte Cook, Skip Williams, based on material by E. Gary Gygax and Dave Arneson.

Starfinder Roleplaying Game Core Rulebook. © 2017, Paizo Inc.; Authors: Alexander Augunas, Logan Bonner, Jason Bulmahn, Thurston Hillman, Amanda Hamon Kunz, Jason Keeley, Robert G. McCreary, Stephen Radney-MacFarland, Amber E. Scott, Mark Seifter, Owen K.C. Stephens, and James L. Sutter, based on material by Jonathan Tweet, Monte Cook, and Skip Williams.

Cosmic Odyssey: Service Bots and Synthetic Companions. © 2017, Fat Goblin Games; Author: Kiel Howell

NAME **TIER**

PRICE

TYPE

Size

Appendages

Frame

Propulsion

Control Interface

SPEED

Propulsion

SYSTEMS

COMPUTER

POWER SOURCE

OUs

CONTROLLER INTERFACE

LANGUAGE

MANUFACTURER

ADD-ONS

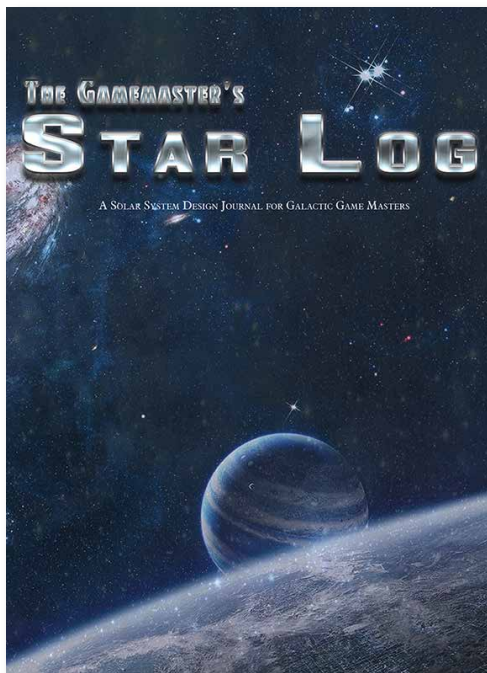
1

2

3

4

START YOUR SPACE ADVENTURES RIGHT WITH FAT GOBLIN GAMES!

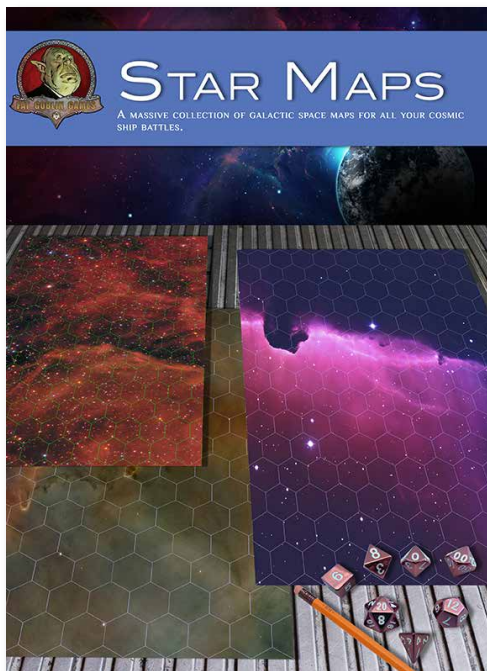


THE GAMEMASTER'S STAR LOG

The Gamemaster's Star Log is perfect for game designers, novelists, and especially gamemasters. Build a solar system, design planets, explore the geography of a moon or space station with this collection of forms, documents, and sheets created to cover all aspects of cosmic design.

Use this journal to nicely print your notes and ideas in a clean compilation, or treat the journal as a scrapbook and write in the margins, glue in pictures, etc. It's perfect for any type of planetary design.

Available in both Print and PDF where Fat Goblin Games products are sold.



FAT GOBLIN GAMES PRESENTS STAR MAPS VOL. 1

Are you itching to fly through the vast, cosmic void of space? Around planets, stars, and asteroids? Do you want beautiful colored nebulas, galaxies, and supernovas as the vista from your viewport? Look no further as StarMaps: Volume I provides you 20 hex gridded maps in space with blackholes, inky void, planets, asteroids, stars, galaxies, nebulas, and more for you to use during any of your space-faring adventures.

Each map is layed out as a portrait measuring 12.25" wide and 18.25" long with 1" hexes. These maps were made with Print-On-Demand in mind to allow for electronic and physical copies without losing any detail.

Available in Print where Fat Goblin Games products are sold.



RPGNOW

COSMIC ODYSSEY SERVICE BOTS AND SYNTHETIC COMPANIONS

I'm completely operational, and all my circuits are functioning perfectly — how may I serve you today?

Who doesn't want a robotic sidekick to join them as they traverse the stars? Well Cosmic Odyssey: Service Bots & Synthetic Companions has you covered!

Cosmic Odyssey is a line of Starfinder Roleplaying Game compatible products designed to give you, as both a player and as a gamemaster, all the tools you need to fully explore a classic motif of science fiction with new character options, equipment and vessels, as well as a location and NPCs. Designed to be dropped into your existing game, or to serve as a starting point for your adventures, each Cosmic Odyssey is ready-made for action. In Service Bots & Synthetic Companions we bring you all the rules you need for building your very own robot pal as well as several pre-made Service Bots, or SBs. These synthetic companions exist in a space outside the fully-autonomous android race and the advanced machine companions of the mechanic class's drones. Instead, our SBs are robotic companions for everyone (that can afford them). And, rather than just generic rules, an entire corporate world of competing manufacturers with different goals and ideals — as well as of course designs — is presented to provide gamemasters with a rich tapestry of backdrops and plot hooks, as well as to give players more flavorful companions than just a string of letters and numbers for their robotic buddies.

FATGOBLINGAMES.COM

